

Mouse Serpin E1/PAI-1 Recombinant Matched Antibody Pair, PBS Only

Catalog Number:MP00875-4

Capture Antibody Information

Catalog Number:
83980-2-PBS
Host:
Rabbit
Isotype:
IgG
Purification Method:
Protein A purification

Clone ID:
241130G3
Reactivity:
mouse
GenBank:

Conjugate:
Unconjugated
Full name:
serine (or cysteine) peptidase inhibitor, clade E, member 1
Gene ID:
18787

Detection Antibody Information

Catalog Number:
83980-3-PBS
Host:
Rabbit
Isotype:
IgG
Purification Method:
Protein A purification

Clone ID:
241130G6
Reactivity:
mouse
GenBank:

Conjugate:
Unconjugated
Full name:
serine (or cysteine) peptidase inhibitor, clade E, member 1
Gene ID:
18787

Applications

Tested Applications:
Sandwich ELISA

Range:
19.5-1250 pg/mL (Sandwich ELISA)

Recommended Dilutions:
It is recommended that this reagent should be titrated in each testing system to obtain optimal results.

Product Information

MP00875-4 targets Serpin E1/PAI-1 in immunoassays as a matched antibody pair. Validated in Sandwich ELISA.

Capture antibody: Mouse Serpin E1/PAI-1 Recombinant antibody, PBS Only (Capture/Detector) 83980-2-PBS (241130G3). 100 µg. Concentration 1 mg/ml.

Detection antibody: Mouse Serpin E1/PAI-1 Recombinant antibody, PBS Only (Capture/Detector) 83980-3-PBS (241130G6). 100 µg. Concentration 1 mg/ml.

Unconjugated rabbit recombinant monoclonal antibody pair in PBS only storage buffer at a concentration of 1 mg/mL, ready for conjugation. Created using Proteintech's proprietary in-house recombinant technology. Recombinant production enables unrivalled batch-to-batch consistency, easy scale-up, and future security of supply.

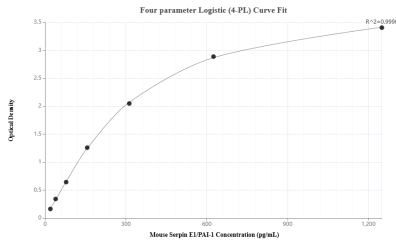
Matched antibody pairs are designed for use in a variety of assays and platforms that require matched antibody pairs.

Antibody use should be optimized for each application and assay.

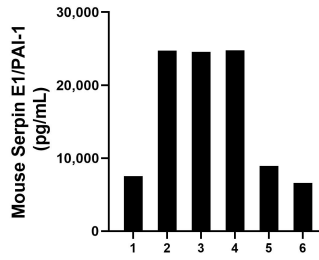
Storage

Storage:
Store at -80°C.
The product is shipped with ice packs. Upon receipt, store it immediately at -80°C
Storage buffer:
PBS only

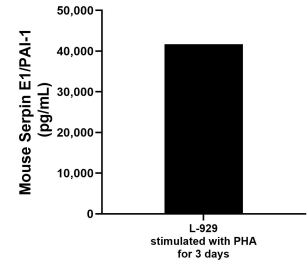
Selected Validation Data



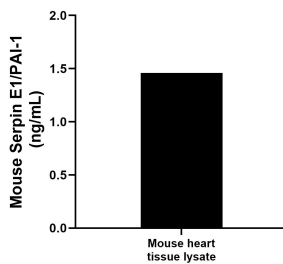
Sandwich ELISA standard curve of MP00875-4, Mouse Serpin E1/PAI-1 Recombinant Matched Antibody Pair - PBS only. 83980-2-PBS was coated to a plate as the capture antibody and incubated with serial dilutions of standard Eg1100. 83980-3-PBS was HRP conjugated as the detection antibody. Range: 19.5-1250 pg/mL



Serum of six mice was measured. The mouse Serpin E1/PAI-1 concentration of detected samples was determined to be 16,187.9 pg/mL with a range of 6,614.7 - 24,758.6 pg/mL.



L-929 mouse fibroblast cells (1×10^6 cells/mL) were cultured for 3 days in MEM supplemented with 10% equine serum and stimulated with $10 \mu\text{g/mL}$ PHA. The cell culture supernatants was assayed for mouse Serpin E1/PAI-1 and measured 41,666.9 pg/mL.



Mouse heart tissue lyaste was measured. The mouse Serpin E1/PAI-1 concentration of detected samples was determined to be 1.46 ng/mL (based on a 4.6 mg/mL extract load).