

NFE2L1 Recombinant Matched Antibody Pair, PBS Only

Catalog Number:MP00878-3

Capture Antibody Information

Catalog Number:
83987-1-PBS
Host:
Rabbit
Isotype:
IgG
Purification Method:
Protein A purification

Clone ID:
241089A12
Reactivity:
human
GenBank:
BC010623
Immunogen Catalog Number:
Ag0525

Conjugate:
Unconjugated
Full name:
nuclear factor (erythroid-derived 2)-like 1
Gene ID:
4779

Detection Antibody Information

Catalog Number:
83987-4-PBS
Host:
Rabbit
Isotype:
IgG
Purification Method:
Protein A purification

Clone ID:
241089G6
Reactivity:
human
GenBank:
BC010623
Immunogen Catalog Number:
Ag0525

Conjugate:
Unconjugated
Full name:
nuclear factor (erythroid-derived 2)-like 1
Gene ID:
4779

Applications

Tested Applications:
Sandwich ELISA

Range:
0.156-10 ng/mL (Sandwich ELISA)

Recommended Dilutions:
It is recommended that this reagent should be titrated in each testing system to obtain optimal results.

Product Information

MP00878-3 targets NFE2L1 in immunoassays as a matched antibody pair. Validated in Sandwich ELISA.

Capture antibody: NFE2L1 Recombinant antibody, PBS Only (Capture/Detector) 83987-1-PBS (241089A12). 100 µg. Concentration 1 mg/ml.

Detection antibody: NFE2L1 Recombinant antibody, PBS Only (Detector) 83987-4-PBS (241089G6). 100 µg. Concentration 1 mg/ml.

Alternative NFE2L1 matched antibody pairs: MP00878-1, MP00878-2

Unconjugated rabbit recombinant monoclonal antibody pair in PBS only storage buffer at a concentration of 1 mg/mL, ready for conjugation. Created using Proteintech's proprietary in-house recombinant technology. Recombinant production enables unrivalled batch-to-batch consistency, easy scale-up, and future security of supply.

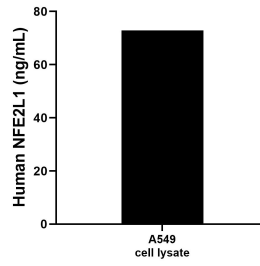
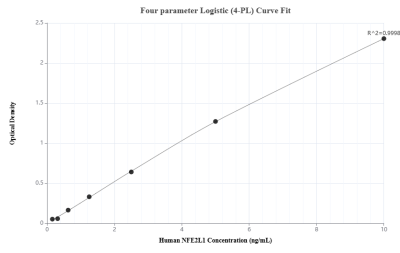
Matched antibody pairs are designed for use in a variety of assays and platforms that require matched antibody pairs.

Antibody use should be optimized for each application and assay.

Storage

Storage:
Store at -80°C.
The product is shipped with ice packs. Upon receipt, store it immediately at -80°C
Storage buffer:
PBS only

Selected Validation Data



Sandwich ELISA standard curve of MP00878-3, Human NFE2L1 Recombinant Matched Antibody Pair - PBS only. 83987-1-PBS was coated to a plate as the capture antibody and incubated with serial dilutions of standard Ag0525. 83987-4-PBS was HRP conjugated as the detection antibody. Range: 0.156-10 ng/mL

A549 cell lysate was measured. The human NFE2L1 concentration of detected samples was determined to be 72.89 ng/mL (based on a 2.2 mg/mL extract load).