

For Research Use Only

# p57Kip2 Recombinant Matched Antibody Pair, PBS Only



Catalog Number:MP00884-4

## Capture Antibody Information

**Catalog Number:**  
83966-2-PBS  
**Host:**  
Rabbit  
**Isotype:**  
IgG  
**Purification Method:**  
Protein A purification

**Clone ID:**  
241025B6  
**Reactivity:**  
human  
**GenBank:**  
BC067842  
**Immunogen Catalog Number:**  
Ag19849

**Conjugate:**  
Unconjugated  
**Full name:**  
cyclin-dependent kinase inhibitor 1C (p57, Kip2)  
**Gene ID:**  
1028

## Detection Antibody Information

**Catalog Number:**  
83966-1-PBS  
**Host:**  
Rabbit  
**Isotype:**  
IgG  
**Purification Method:**  
Protein A purification

**Clone ID:**  
241025A8  
**Reactivity:**  
human  
**GenBank:**  
BC067842  
**Immunogen Catalog Number:**  
Ag19849

**Conjugate:**  
Unconjugated  
**Full name:**  
cyclin-dependent kinase inhibitor 1C (p57, Kip2)  
**Gene ID:**  
1028

## Applications

**Tested Applications:**  
Sandwich ELISA

**Range:**  
0.313-20 ng/mL (Sandwich ELISA)

**Recommended Dilutions:**  
It is recommended that this reagent should be titrated in each testing system to obtain optimal results.

## Product Information

MP00884-4 targets p57Kip2 in immunoassays as a matched antibody pair. Validated in Sandwich ELISA.

Capture antibody: p57Kip2 Recombinant antibody, PBS Only (Capture) 83966-2-PBS (241025B6). 100 µg. Concentration 1 mg/ml.

Detection antibody: p57Kip2 Recombinant antibody, PBS Only (Detector) 83966-1-PBS (241025A8). 100 µg. Concentration 1 mg/ml.

Alternative p57Kip2 matched antibody pairs: MP00884-1, MP00884-2, MP00884-3

Unconjugated rabbit recombinant monoclonal antibody pair in PBS only storage buffer at a concentration of 1 mg/mL, ready for conjugation. Created using Proteintech's proprietary in-house recombinant technology. Recombinant production enables unrivalled batch-to-batch consistency, easy scale-up, and future security of supply.

Matched antibody pairs are designed for use in a variety of assays and platforms that require matched antibody pairs.

Antibody use should be optimized for each application and assay.

## Storage

**Storage:**  
Store at -80°C.  
**The product is shipped with ice packs. Upon receipt, store it immediately at -80°C**  
**Storage buffer:**  
PBS only

For technical support and original validation data for this product please contact:

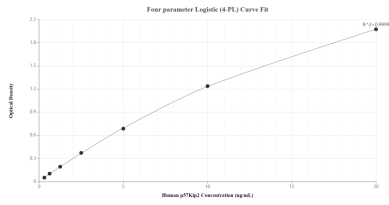
T: 4006900926

E: [Proteintech-CN@ptglab.com](mailto:Proteintech-CN@ptglab.com)

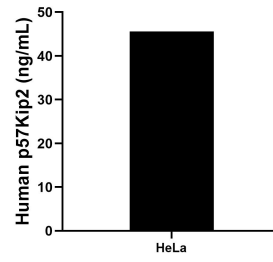
W: [ptgcn.com](http://ptgcn.com)

**This product is exclusively available under Proteintech Group brand and is not available to purchase from any other manufacturer.**

## Selected Validation Data



Sandwich ELISA standard curve of MP00884-4, Human p57Kip2 Recombinant Matched Antibody Pair - PBS only. 83966-2-PBS was coated to a plate as the capture antibody and incubated with serial dilutions of standard Ag19849. 83966-1-PBS was HRP conjugated as the detection antibody. Range: 0.313-20 ng/mL.



The mean p57Kip2 concentration was determined to be 45.59 ng/mL in HeLa cell extract based on a 1.50 mg/mL extract load.