

For Research Use Only

CRMP2 Recombinant Matched Antibody Pair, PBS Only



Catalog Number:MP00886-2

Capture Antibody Information

Catalog Number:
83990-3-PBS
Host:
Rabbit
Isotype:
IgG
Purification Method:
Protein A purification

Clone ID:
241088D3
Reactivity:
human
GenBank:
BC067109
Immunogen Catalog Number:
Ag5987

Conjugate:
Unconjugated
Full name:
dihydropyrimidinase-like 2
Gene ID:
1808

Detection Antibody Information

Catalog Number:
83990-4-PBS
Host:
Rabbit
Isotype:
IgG
Purification Method:
Protein A purification

Clone ID:
241088B5
Reactivity:
human
GenBank:
BC067109
Immunogen Catalog Number:
Ag5987

Conjugate:
Unconjugated
Full name:
dihydropyrimidinase-like 2
Gene ID:
1808

Applications

Tested Applications:
Sandwich ELISA

Range:
1.95-125 ng/mL (Sandwich ELISA)

Recommended Dilutions:
It is recommended that this reagent should be titrated in each testing system to obtain optimal results.

Product Information

MP00886-2 targets CRMP2 in immunoassays as a matched antibody pair. Validated in Sandwich ELISA.

Capture antibody: DPYSL2 Recombinant antibody, PBS Only (Capture) 83990-3-PBS (241088D3). 100 µg. Concentration 1 mg/ml.

Detection antibody: DPYSL2 Recombinant antibody, PBS Only (Detector) 83990-4-PBS (241088B5). 100 µg. Concentration 1 mg/ml.

Alternative CRMP2 matched antibody pairs: MP00886-1

Unconjugated rabbit recombinant monoclonal antibody pair in PBS only storage buffer at a concentration of 1 mg/mL, ready for conjugation. Created using Proteintech's proprietary in-house recombinant technology. Recombinant production enables unrivalled batch-to-batch consistency, easy scale-up, and future security of supply.

Matched antibody pairs are designed for use in a variety of assays and platforms that require matched antibody pairs.

Antibody use should be optimized for each application and assay.

Storage

Storage:
Store at -80°C.
The product is shipped with ice packs. Upon receipt, store it immediately at -80°C
Storage buffer:
PBS only

For technical support and original validation data for this product please contact:

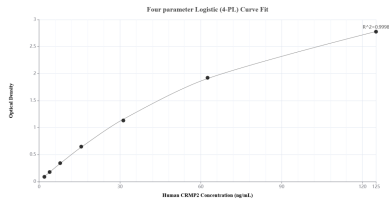
T: 4006900926

E: Proteintech-CN@ptglab.com

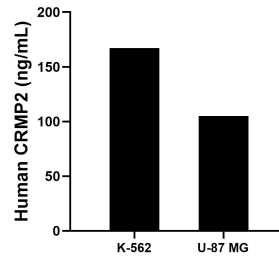
W: ptgcn.com

This product is exclusively available under Proteintech Group brand and is not available to purchase from any other manufacturer.

Selected Validation Data



Sandwich ELISA standard curve of MP00886-2, Human CRMP2 Recombinant Matched Antibody Pair - PBS only. 83990-3-PBS was coated to a plate as the capture antibody and incubated with serial dilutions of standard Ag5987. 83990-4-PBS was HRP conjugated as the detection antibody. Range: 1.95-125 ng/mL



The mean CRMP2 concentration was determined to be 167.28 ng/mL in K-562 cell extract based on a 2.10 mg/mL extract load and 105.42 ng/mL in U-87 MG cell extract based on a 3.40 mg/mL extract load.