

For Research Use Only

# SLC38A2 Recombinant Matched Antibody Pair, PBS Only



Catalog Number:MP00889-3

## Capture Antibody Information

**Catalog Number:**  
83968-4-PBS  
**Host:**  
Rabbit  
**Isotype:**  
IgG  
**Purification Method:**  
Protein A purification

**Clone ID:**  
241059G7  
**Reactivity:**  
human  
**GenBank:**  
BC040342  
**Immunogen Catalog Number:**  
Ag23082

**Conjugate:**  
Unconjugated  
**Full name:**  
solute carrier family 38, member 2  
**Gene ID:**  
54407

## Detection Antibody Information

**Catalog Number:**  
83968-3-PBS  
**Host:**  
Rabbit  
**Isotype:**  
IgG  
**Purification Method:**  
Protein A purification

**Clone ID:**  
241059G3  
**Reactivity:**  
human  
**GenBank:**  
BC040342  
**Immunogen Catalog Number:**  
Ag23082

**Conjugate:**  
Unconjugated  
**Full name:**  
solute carrier family 38, member 2  
**Gene ID:**  
54407

## Applications

**Tested Applications:**  
Cytometric bead array, Sandwich ELISA

**Range:**  
0.625-40 ng/mL (Cytometric Bead Array)  
19.5-1250 pg/mL (Sandwich ELISA)

**Recommended Dilutions:**  
It is recommended that this reagent should be titrated in each testing system to obtain optimal results.

## Product Information

MP00889-3 targets SLC38A2 in immunoassays as a matched antibody pair. Validated in Cytometric bead array, Sandwich ELISA.

Capture antibody: SLC38A2 Recombinant antibody, PBS Only (Capture) 83968-4-PBS (241059G7). 100 µg. Concentration 1 mg/ml.

Detection antibody: SLC38A2 Recombinant antibody, PBS Only (Detector) 83968-3-PBS (241059G3). 100 µg. Concentration 1 mg/ml.

Alternative SLC38A2 matched antibody pairs: MP00889-1, MP00889-2

Unconjugated rabbit recombinant monoclonal antibody pair in PBS only storage buffer at a concentration of 1 mg/mL, ready for conjugation. Created using Proteintech's proprietary in-house recombinant technology. Recombinant production enables unrivalled batch-to-batch consistency, easy scale-up, and future security of supply.

Matched antibody pairs are designed for use in a variety of assays and platforms that require matched antibody pairs.

Antibody use should be optimized for each application and assay.

## Storage

**Storage:**  
Store at -80°C.  
**The product is shipped with ice packs. Upon receipt, store it immediately at -80°C**  
**Storage buffer:**  
PBS only

For technical support and original validation data for this product please contact:

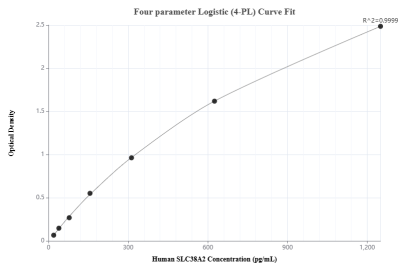
T: 4006900926

E: [Proteintech-CN@ptglab.com](mailto:Proteintech-CN@ptglab.com)

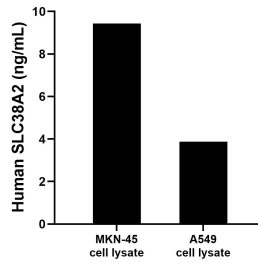
W: [ptgcn.com](http://ptgcn.com)

**This product is exclusively available under Proteintech Group brand and is not available to purchase from any other manufacturer.**

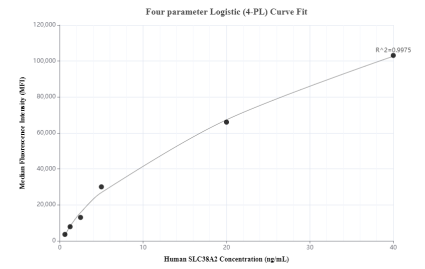
## Selected Validation Data



Sandwich ELISA standard curve of MP00889-3, Human SLC38A2 Recombinant Matched Antibody Pair - PBS only. 83968-4-PBS was coated to a plate as the capture antibody and incubated with serial dilutions of standard Ag23082. 83968-3-PBS was HRP conjugated as the detection antibody. Range: 19.5-1250 pg/mL



MKN-45 and A549 cell lysate were measured. The human SLC38A2 concentration of detected samples was determined to be 9.43 ng/mL (based on a 9.5 mg/mL extract load) in MKN-45 cell lysate and 3.88 ng/mL (based on a 1.0 mg/mL extract load) in A549 cell lysate.



Cytometric bead array standard curve of MP00889-3, SLC38A2 Recombinant Matched Antibody Pair, PBS Only. Capture antibody: 83968-4-PBS. Detection antibody: 83968-3-PBS. Standard: Ag23082. Range: 0.625-40 ng/mL