

For Research Use Only

YTHDC2 Recombinant Matched Antibody Pair, PBS Only



Catalog Number:MP00893-3

Capture Antibody Information

Catalog Number:
83970-3-PBS

Host:
Rabbit

Isotype:
IgG

Purification Method:
Protein A purification

Clone ID:
241123G1

Reactivity:
human

GenBank:
BC137285

Immunogen Catalog Number:
Ag26690

Conjugate:
Unconjugated

Full name:
YTH domain containing 2

Gene ID:
64848

Detection Antibody Information

Catalog Number:
83970-1-PBS

Host:
Rabbit

Isotype:
IgG

Purification Method:
Protein A purification

Clone ID:
241123A9

Reactivity:
human, mouse

GenBank:
BC137285

Immunogen Catalog Number:
Ag26690

Conjugate:
Unconjugated

Full name:
YTH domain containing 2

Gene ID:
64848

Applications

Tested Applications:
Sandwich ELISA

Range:
0.625-20 ng/mL (Sandwich ELISA)

Recommended Dilutions:
It is recommended that this reagent should be titrated in each testing system to obtain optimal results.

Product Information

MP00893-3 targets YTHDC2 in immunoassays as a matched antibody pair. Validated in Sandwich ELISA.

Capture antibody: YTHDC2 Recombinant antibody, PBS Only (Capture/Detector) 83970-3-PBS (241123G1). 100 μ g. Concentration 1 mg/ml.

Detection antibody: YTHDC2 Recombinant antibody, PBS Only (Detector) 83970-1-PBS (241123A9). 100 μ g. Concentration 1 mg/ml.

Alternative YTHDC2 matched antibody pairs: MP00893-1, MP00893-2

Unconjugated rabbit recombinant monoclonal antibody pair in PBS only storage buffer at a concentration of 1 mg/mL, ready for conjugation. Created using Proteintech's proprietary in-house recombinant technology. Recombinant production enables unrivalled batch-to-batch consistency, easy scale-up, and future security of supply.

Matched antibody pairs are designed for use in a variety of assays and platforms that require matched antibody pairs.

Antibody use should be optimized for each application and assay.

Storage

Storage:

Store at -80°C.

The product is shipped with ice packs. Upon receipt, store it immediately at -80°C

Storage buffer:

PBS only

For technical support and original validation data for this product please contact:

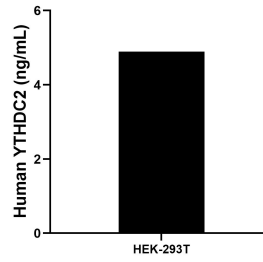
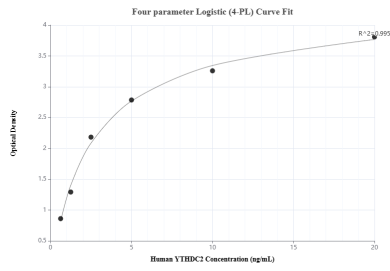
T: 4006900926

E: Proteintech-CN@ptglab.com

W: ptgcn.com

This product is exclusively available under Proteintech Group brand and is not available to purchase from any other manufacturer.

Selected Validation Data



Sandwich ELISA standard curve of MP00893-3, Human YTHDC2 Recombinant Matched Antibody Pair - PBS only. 83970-3-PBS was coated to a plate as the capture antibody and incubated with serial dilutions of standard Ag26690. 83970-1-PBS was HRP conjugated as the detection antibody. Range: 0.625-20 ng/mL

The mean YTHDC2 concentration was determined to be 4.89 ng/mL in HEK-293T cell extract based on a 1.4 mg/mL extract load.