

For Research Use Only

Histone H1.0 Recombinant Matched Antibody Pair, PBS Only



Catalog Number:MP00895-1

Capture Antibody Information

Catalog Number:
83993-3-PBS
Host:
Rabbit
Isotype:
IgG
Purification Method:
Protein A purification

Clone ID:
241147F9
Reactivity:
human
GenBank:
BC000145
Immunogen Catalog Number:
Ag9982

Conjugate:
Unconjugated
Full name:
H1 histone family, member 0
Gene ID:
3005

Detection Antibody Information

Catalog Number:
83993-1-PBS
Host:
Rabbit
Isotype:
IgG
Purification Method:
Protein A purification

Clone ID:
241147D2
Reactivity:
human, mouse, rat
GenBank:
BC000145
Immunogen Catalog Number:
Ag9982

Conjugate:
Unconjugated
Full name:
H1 histone family, member 0
Gene ID:
3005

Applications

Tested Applications:
Cytometric bead array, Sandwich ELISA

Range:
0.781-100 ng/mL (Cytometric Bead Array)
0.937-60 ng/mL (Sandwich ELISA)

Recommended Dilutions:
It is recommended that this reagent should be titrated in each testing system to obtain optimal results.

Product Information

MP00895-1 targets Histone H1.0 in immunoassays as a matched antibody pair. Validated in Cytometric bead array, Sandwich ELISA.

Capture antibody: Histone H1.0 Recombinant antibody, PBS Only (Capture) 83993-3-PBS (241147F9). 100 µg. Concentration 1 mg/ml.

Detection antibody: Histone H1.0 Recombinant antibody, PBS Only (Detector) 83993-1-PBS (241147D2). 100 µg. Concentration 1 mg/ml.

Alternative Histone H1.0 matched antibody pairs: MP00895-2, MP00895-3

Unconjugated rabbit recombinant monoclonal antibody pair in PBS only storage buffer at a concentration of 1 mg/mL, ready for conjugation. Created using Proteintech's proprietary in-house recombinant technology. Recombinant production enables unrivalled batch-to-batch consistency, easy scale-up, and future security of supply.

Matched antibody pairs are designed for use in a variety of assays and platforms that require matched antibody pairs.

Antibody use should be optimized for each application and assay.

Storage

Storage:
Store at -80°C.
The product is shipped with ice packs. Upon receipt, store it immediately at -80°C
Storage buffer:
PBS only

For technical support and original validation data for this product please contact:

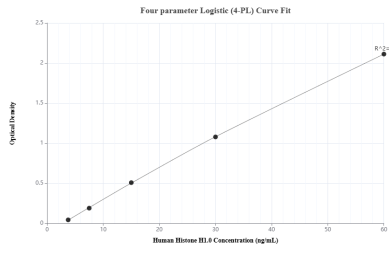
T: 4006900926

E: Proteintech-CN@ptglab.com

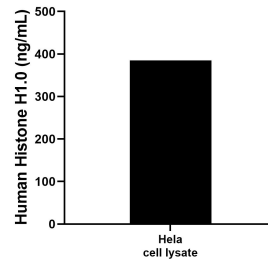
W: ptgcn.com

This product is exclusively available under Proteintech Group brand and is not available to purchase from any other manufacturer.

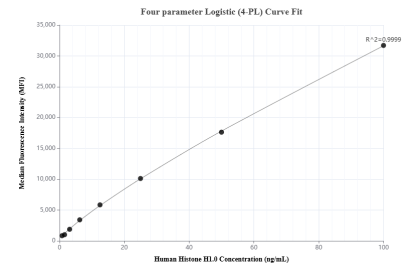
Selected Validation Data



Sandwich ELISA standard curve of MP00895-1, Human Histone H1.0 Recombinant Matched Antibody Pair - PBS only. 83993-3-PBS was coated to a plate as the capture antibody and incubated with serial dilutions of standard Ag9982. 83993-1-PBS was HRP conjugated as the detection antibody. Range: 0.937-60 ng/mL



HeLa cell lysate was measured. The human Histone H1.0 concentration of detected samples was determined to be 385.31 ng/mL (based on a 2.0 mg/mL extract load).



Cytometric bead array standard curve of MP00895-1, Histone H1.0 Recombinant Matched Antibody Pair, PBS Only. Capture antibody: 83993-3-PBS. Detection antibody: 83993-1-PBS. Standard: Ag9982. Range: 0.781-100 ng/mL