

For Research Use Only

# LBP Recombinant Matched Antibody Pair, PBS Only



Catalog Number:MP00906-2

## Capture Antibody Information

Catalog Number:  
83427-3-PBS

Host:  
Rabbit

Isotype:  
IgG

Purification Method:  
Protein A purification

Clone ID:  
241106F6

Reactivity:  
human

GenBank:  
NM\_004139.4

Conjugate:  
Unconjugated

Full name:  
lipopolysaccharide binding protein

Gene ID:  
3929

## Detection Antibody Information

Catalog Number:  
83427-2-PBS

Host:  
Rabbit

Isotype:  
IgG

Purification Method:  
Protein A purification

Clone ID:  
241106D3

Reactivity:  
human

GenBank:  
NM\_004139.4

Conjugate:  
Unconjugated

Full name:  
lipopolysaccharide binding protein

Gene ID:  
3929

## Applications

Tested Applications:  
Cytometric bead array

Range:  
0.625-40 ng/mL (Cytometric Bead Array)

Recommended Dilutions:  
It is recommended that this reagent should be titrated in each testing system to obtain optimal results.

## Product Information

MP00906-2 targets LBP in immunoassays as a matched antibody pair. Validated in Cytometric bead array.

Capture antibody: LBP Recombinant antibody, PBS Only (Capture) 83427-3-PBS (241106F6). 100  $\mu$ g. Concentration 1 mg/mL.

Detection antibody: LBP Recombinant antibody, PBS Only (Capture/Detector) 83427-2-PBS (241106D3). 100  $\mu$ g. Concentration 1 mg/mL.

Alternative LBP matched antibody pairs: MP00906-1, MP00906-3

Unconjugated rabbit recombinant monoclonal antibody pair in PBS only storage buffer at a concentration of 1 mg/mL, ready for conjugation. Created using Proteintech's proprietary in-house recombinant technology. Recombinant production enables unrivalled batch-to-batch consistency, easy scale-up, and future security of supply.

Matched antibody pairs are designed for use in a variety of assays and platforms that require matched antibody pairs.

Antibody use should be optimized for each application and assay.

## Storage

Storage:  
Store at -80°C.  
**The product is shipped with ice packs. Upon receipt, store it immediately at -80°C**  
Storage buffer:  
PBS only

For technical support and original validation data for this product please contact:

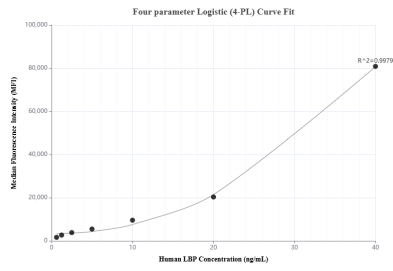
T: 4006900926

E: [Proteintech-CN@ptglab.com](mailto:Proteintech-CN@ptglab.com)

W: [ptgcn.com](http://ptgcn.com)

**This product is exclusively available under Proteintech Group brand and is not available to purchase from any other manufacturer.**

## Selected Validation Data



Cytometric bead array standard curve of MP00906-2, LBP Recombinant Matched Antibody Pair, PBS Only. Capture antibody: 83427-3-PBS. Detection antibody: 83427-2-PBS. Standard: Eg0651. Range: 0.625-40 ng/mL