

For Research Use Only

Mouse CTLA-4/CD152 Recombinant Matched Antibody Pair, PBS Only



Catalog Number:MP00907-4

Capture Antibody Information

Catalog Number:
83995-3-PBS
Host:
Rabbit
Isotype:
IgG
Purification Method:
Protein A purification

Clone ID:
241100C6
Reactivity:
mouse
GenBank:
NM_009843.4

Conjugate:
Unconjugated
Full name:
cytotoxic T-lymphocyte-associated protein 4
Gene ID:
12477

Detection Antibody Information

Catalog Number:
83995-5-PBS
Host:
Rabbit
Isotype:
IgG
Purification Method:
Protein A purification

Clone ID:
241100C10
Reactivity:
mouse
GenBank:
NM_009843.4

Conjugate:
Unconjugated
Full name:
cytotoxic T-lymphocyte-associated protein 4
Gene ID:
12477

Applications

Tested Applications:
Sandwich ELISA

Range:
15.6-1000 pg/mL (Sandwich ELISA)

Recommended Dilutions:
It is recommended that this reagent should be titrated in each testing system to obtain optimal results.

Product Information

MP00907-4 targets CTLA-4/CD152 in immunoassays as a matched antibody pair. Validated in Sandwich ELISA.
Capture antibody: Mouse CTLA-4/CD152 Recombinant antibody, PBS Only (Capture) 83995-3-PBS (241100C6). 100 μ g. Concentration 1 mg/ml.
Detection antibody: Mouse CTLA-4/CD152 Recombinant antibody, PBS Only (Detector) 83995-5-PBS (241100C10). 100 μ g. Concentration 1 mg/ml.
Alternative CTLA-4/CD152 matched antibody pairs: MP00736-1, MP00736-2, MP00736-3, MP00736-4, MP00907-1, MP00907-2, MP00907-3, MP50106-1, MP50106-2
Unconjugated rabbit recombinant monoclonal antibody pair in PBS only storage buffer at a concentration of 1 mg/ml, ready for conjugation. Created using Proteintech's proprietary in-house recombinant technology. Recombinant production enables unrivalled batch-to-batch consistency, easy scale-up, and future security of supply.
Matched antibody pairs are designed for use in a variety of assays and platforms that require matched antibody pairs.
Antibody use should be optimized for each application and assay.

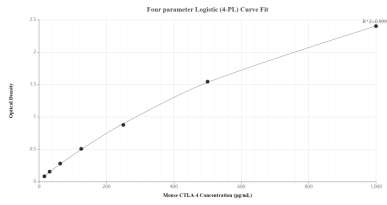
Storage

Storage:
Store at -80°C.
The product is shipped with ice packs. Upon receipt, store it immediately at -80°C
Storage buffer:
PBS only

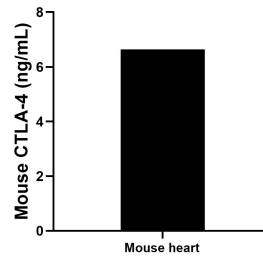
For technical support and original validation data for this product please contact:
T: 4006900926 E: Proteintech-CN@ptgcn.com W: ptgcn.com

This product is exclusively available under Proteintech Group brand and is not available to purchase from any other manufacturer.

Selected Validation Data



Sandwich ELISA standard curve of MP00907-4, Mouse CTLA-4 Recombinant Matched Antibody Pair - PBS only. 83995-3-PBS was coated to a plate as the capture antibody and incubated with serial dilutions of standard Eg0632. 83995-5-PBS was HRP conjugated as the detection antibody. Range: 15.6-1000 pg/mL



The mean CTLA-4 concentration was determined to be 6.64 ng/mL in mouse heart cell extract based on a 1.20 mg/mL extract load.