

LTBP4 Recombinant Matched Antibody Pair, PBS Only

Catalog Number:MP00912-1

Capture Antibody Information

Catalog Number:
83948-2-PBS
Host:
Rabbit
Isotype:
IgG
Purification Method:
Protein A purification

Clone ID:
241056B6
Reactivity:
human
GenBank:
NM_001042544
Immunogen Catalog Number:
Ag34270

Conjugate:
Unconjugated
Full name:
latent transforming growth factor beta binding protein 4
Gene ID:
8425

Detection Antibody Information

Catalog Number:
83948-3-PBS
Host:
Rabbit
Isotype:
IgG
Purification Method:
Protein A purification

Clone ID:
241056G6
Reactivity:
human
GenBank:
NM_001042544
Immunogen Catalog Number:
Ag34270

Conjugate:
Unconjugated
Full name:
latent transforming growth factor beta binding protein 4
Gene ID:
8425

Applications

Tested Applications:
Cytometric bead array

Range:
0.313-40 ng/mL (Cytometric Bead Array)

Recommended Dilutions:
It is recommended that this reagent should be titrated in each testing system to obtain optimal results.

Product Information

MP00912-1 targets LTBP4 in immunoassays as a matched antibody pair. Validated in Cytometric bead array.

Capture antibody: LTBP4 Recombinant antibody, PBS Only (Capture) 83948-2-PBS (241056B6). 100 µg. Concentration 1 mg/ml.

Detection antibody: LTBP4 Recombinant antibody, PBS Only (Detector) 83948-3-PBS (241056G6). 100 µg. Concentration 1 mg/ml.

Alternative LTBP4 matched antibody pairs: MP00912-2, MP00912-3

Unconjugated rabbit recombinant monoclonal antibody pair in PBS only storage buffer at a concentration of 1 mg/mL, ready for conjugation. Created using Proteintech's proprietary in-house recombinant technology. Recombinant production enables unrivalled batch-to-batch consistency, easy scale-up, and future security of supply.

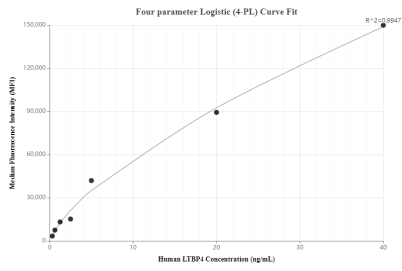
Matched antibody pairs are designed for use in a variety of assays and platforms that require matched antibody pairs.

Antibody use should be optimized for each application and assay.

Storage

Storage:
Store at -80°C.
The product is shipped with ice packs. Upon receipt, store it immediately at -80°C
Storage buffer:
PBS only

Selected Validation Data



Cytometric bead array standard curve of MP00912-1, LTBP4 Recombinant Matched Antibody Pair, PBS Only. Capture antibody: 83948-2-PBS. Detection antibody: 83948-3-PBS. Standard: Ag34270. Range: 0.313-40 ng/mL