

For Research Use Only

# XBP1S Recombinant Matched Antibody Pair, PBS Only



Catalog Number:MP00917-4

## Capture Antibody Information

Catalog Number:  
83959-7-PBS

Host:  
Rabbit

Isotype:  
IgG

Purification Method:  
Protein A purification

Clone ID:  
241004A5

Reactivity:  
human

GenBank:  
BC000938

Immunogen Catalog Number:  
Ag21703

Conjugate:  
Unconjugated

Full name:  
X-box binding protein 1

Gene ID:  
7494

## Detection Antibody Information

Catalog Number:  
83959-1-PBS

Host:  
Rabbit

Isotype:  
IgG

Purification Method:  
Protein A purification

Clone ID:  
241004E1

Reactivity:  
human

GenBank:  
BC000938

Immunogen Catalog Number:  
Ag21703

Conjugate:  
Unconjugated

Full name:  
X-box binding protein 1

Gene ID:  
7494

## Applications

Tested Applications:  
Sandwich ELISA

Range:  
39.1-2500 pg/mL (Sandwich ELISA)

Recommended Dilutions:  
It is recommended that this reagent should be titrated in each testing system to obtain optimal results.

## Product Information

MP00917-4 targets XBP1S in immunoassays as a matched antibody pair. Validated in Sandwich ELISA.

Capture antibody: XBP1S-specific Recombinant antibody, PBS Only (Capture) 83959-7-PBS (241004A5). 100 µg. Concentration 1 mg/ml.

Detection antibody: XBP1S-specific Recombinant antibody, PBS Only (Detector) 83959-1-PBS (241004E1). 100 µg. Concentration 1 mg/ml.

Alternative XBP1S matched antibody pairs: MP00917-1, MP00917-2, MP00917-3

Unconjugated rabbit recombinant monoclonal antibody pair in PBS only storage buffer at a concentration of 1 mg/mL, ready for conjugation. Created using Proteintech's proprietary in-house recombinant technology. Recombinant production enables unrivalled batch-to-batch consistency, easy scale-up, and future security of supply.

Matched antibody pairs are designed for use in a variety of assays and platforms that require matched antibody pairs.

Antibody use should be optimized for each application and assay.

## Storage

Storage:

Store at -80°C.

**The product is shipped with ice packs. Upon receipt, store it immediately at -80°C**

Storage buffer:

PBS only

For technical support and original validation data for this product please contact:

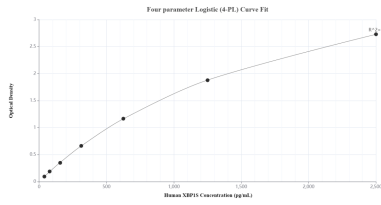
T: 4006900926

E: [Proteintech-CN@ptglab.com](mailto:Proteintech-CN@ptglab.com)

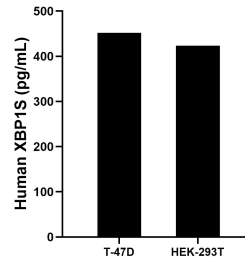
W: [ptgcn.com](http://ptgcn.com)

**This product is exclusively available under Proteintech Group brand and is not available to purchase from any other manufacturer.**

## Selected Validation Data



Sandwich ELISA standard curve of MP00917-4, Human XBP1S Recombinant Matched Antibody Pair - PBS only. 83959-7-PBS was coated to a plate as the capture antibody and incubated with serial dilutions of standard Ag21703. 83959-1-PBS was HRP conjugated as the detection antibody. Range: 39.1-2500 pg/mL.



The mean XBP1S concentration was determined to be 451.7 pg/mL in T-47D cell extract based on a 4.5 mg/mL extract load and 423.7 pg/mL in HEK-293T cell extract based on a 1.4 mg/mL extract load.