

For Research Use Only

# CXCL1 Recombinant Matched Antibody Pair, PBS Only



Catalog Number:MP00922-2

## Capture Antibody Information

Catalog Number:  
83937-1-PBS

Host:  
Rabbit

Isotype:  
IgG

Purification Method:  
Protein A purification

Clone ID:  
240990E5

Reactivity:  
human

GenBank:  
BC011976

Immunogen Catalog Number:  
Ag2917

Conjugate:  
Unconjugated

Full name:  
chemokine (C-X-C motif) ligand 1  
(melanoma growth stimulating  
activity, alpha)

Gene ID:  
2919

## Detection Antibody Information

Catalog Number:  
83937-2-PBS

Host:  
Rabbit

Isotype:  
IgG

Purification Method:  
Protein A purification

Clone ID:  
240990G2

Reactivity:  
human

GenBank:  
BC011976

Immunogen Catalog Number:  
Ag2917

Conjugate:  
Unconjugated

Full name:  
chemokine (C-X-C motif) ligand 1  
(melanoma growth stimulating  
activity, alpha)

Gene ID:  
2919

## Applications

Tested Applications:  
Sandwich ELISA

Range:  
31.25-2000 pg/mL (Sandwich ELISA)

Recommended Dilutions:  
It is recommended that this reagent  
should be titrated in each testing  
system to obtain optimal results.

## Product Information

MP00922-2 targets CXCL1 in immunoassays as a matched antibody pair. Validated in Sandwich ELISA.

Capture antibody: CXCL1 Recombinant antibody, PBS Only (Capture/Detector) 83937-1-PBS (240990E5). 100  $\mu$ g. Concentration 1 mg/ml.

Detection antibody: CXCL1 Recombinant antibody, PBS Only (Capture/Detector) 83937-2-PBS (240990G2). 100  $\mu$ g. Concentration 1 mg/ml.

Unconjugated rabbit recombinant monoclonal antibody pair in PBS only storage buffer at a concentration of 1 mg/mL, ready for conjugation. Created using Proteintech's proprietary in-house recombinant technology. Recombinant production enables unrivalled batch-to-batch consistency, easy scale-up, and future security of supply.

Matched antibody pairs are designed for use in a variety of assays and platforms that require matched antibody pairs.

Antibody use should be optimized for each application and assay.

## Storage

Storage:

Store at -80°C.

The product is shipped with ice packs. Upon receipt, store it immediately at -80°C

Storage buffer:

PBS only

For technical support and original validation data for this product please contact:

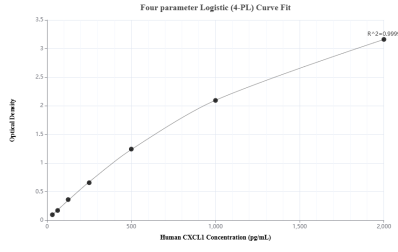
T: 4006900926

E: Proteintech-CN@ptglab.com

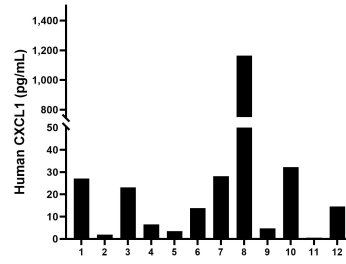
W: ptgcn.com

This product is exclusively available under Proteintech Group brand and is not available to purchase from any other manufacturer.

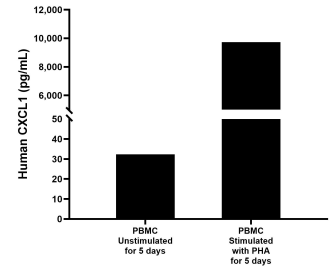
## Selected Validation Data



Sandwich ELISA standard curve of MP00922-2, Human CXCL1 Recombinant Matched Antibody Pair - PBS only. 83937-1-PBS was coated to a plate as the capture antibody and incubated with serial dilutions of standard Ag2917. 83937-2-PBS was biotinylated as the detection antibody. Range: 31.25-2000 pg/mL



Serum of twelve individual healthy human donors was measured. The human CXCL1 concentration of detected samples was determined to be 110.0 pg/mL with a range of 0.6 - 1,164.0 pg/mL



Human peripheral blood mononuclear cells (PBMC) were cultured unstimulated or stimulated with 10  $\mu$ g/mL PHA for 5 days. The mean CXCL1 concentration was determined to be 32.4 pg/mL in unstimulated PBMC supernatant, 9,728.4 pg/mL in PHA stimulated PBMC supernatant.