

For Research Use Only

MCP-1/CCL2 Recombinant Matched Antibody Pair, PBS Only



Catalog Number:MP00938-1

Capture Antibody Information

Catalog Number:
80847-4-PBS

Host:
Rabbit

Isotype:
IgG

Purification Method:
Protein A purification

Clone ID:
241165B11

Reactivity:
human

GenBank:
BC009716

Conjugate:
Unconjugated

Full name:
chemokine (C-C motif) ligand 2

Gene ID:
6347

Detection Antibody Information

Catalog Number:
80847-7-PBS

Host:
Rabbit

Isotype:
IgG

Purification Method:
Protein A purification

Clone ID:
241165G2

Reactivity:
human

GenBank:
BC009716

Conjugate:
Unconjugated

Full name:
chemokine (C-C motif) ligand 2

Gene ID:
6347

Applications

Tested Applications:
Cytometric bead array, Sandwich ELISA

Range:
0.313-20 ng/mL (Cytometric Bead Array)
7.8-500 pg/mL (Sandwich ELISA)

Recommended Dilutions:
It is recommended that this reagent should be titrated in each testing system to obtain optimal results.

Product Information

MP00938-1 targets MCP-1/CCL2 in immunoassays as a matched antibody pair. Validated in Cytometric bead array, Sandwich ELISA.

Capture antibody: MCP-1/CCL2 Recombinant antibody, PBS Only (Capture) 80847-4-PBS (241165B11). 100 µg. Concentration 1 mg/ml.

Detection antibody: MCP-1/CCL2 Recombinant antibody, PBS Only (Detector) 80847-7-PBS (241165G2). 100 µg. Concentration 1 mg/ml.

Alternative MCP-1/CCL2 matched antibody pairs: MP00168-1, MP00168-2, MP00168-3, MP00168-4, MP00390-1, MP00390-2, MP00390-3, MP00938-2, MP00938-3

Unconjugated rabbit recombinant monoclonal antibody pair in PBS only storage buffer at a concentration of 1 mg/mL, ready for conjugation. Created using Proteintech's proprietary in-house recombinant technology. Recombinant production enables unrivalled batch-to-batch consistency, easy scale-up, and future security of supply.

Matched antibody pairs are designed for use in a variety of assays and platforms that require matched antibody pairs.

Antibody use should be optimized for each application and assay.

Storage

Storage:
Store at -80°C.

The product is shipped with ice packs. Upon receipt, store it immediately at -80°C

Storage buffer:
PBS only

For technical support and original validation data for this product please contact:

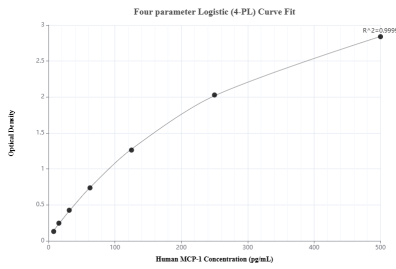
T: 4006900926

E: Proteintech-CN@ptglab.com

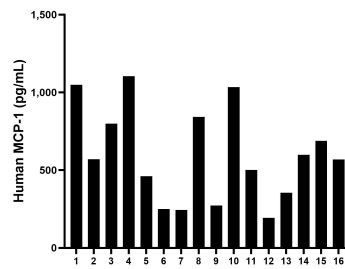
W: ptgcn.com

This product is exclusively available under Proteintech Group brand and is not available to purchase from any other manufacturer.

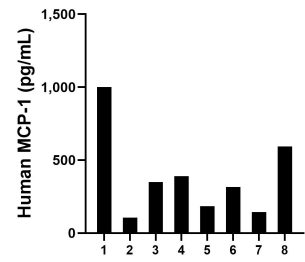
Selected Validation Data



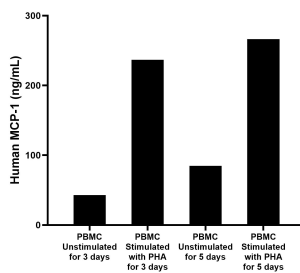
Sandwich ELISA standard curve of MP00938-1, Human MCP-1 Recombinant Matched Antibody Pair - PBS only. 80847-4-PBS was coated to a plate as the capture antibody and incubated with serial dilutions of standard Eg31375. 80847-7-PBS was HRP conjugated as the detection antibody. Range: 7.8-500 pg/mL



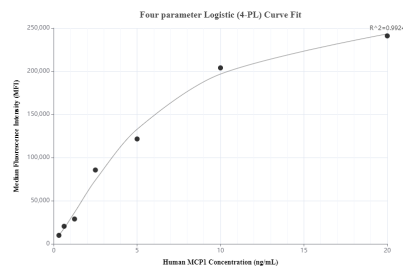
Serum of sixteen individual healthy human donors was measured. The human MCP-1 concentration of detected samples was determined to be 595.9 pg/mL with a range of 193.4 - 1,105.3 pg/mL



Urine of eight individual healthy human donors was measured. The human MCP-1 concentration of detected samples was determined to be 385.1 pg/mL with a range of 106.1 - 999.8 pg/mL



Human peripheral blood mononuclear cells (1×10^6 cells/mL) were cultured in RPMI-1640 supplemented with 10% fetal bovine serum, 100 U/mL penicillin, and 100 μ g/mL streptomycin sulfate. The cells were unstimulated or stimulated with 10 μ g/mL PHA. Aliquots of the cell culture supernates were removed on days 3 and 5 and assayed for levels of human MCP-1.



Cytometric bead array standard curve of MP00938-1, MCP-1 Recombinant Matched Antibody Pair, PBS Only. Capture antibody: 80847-4-PBS. Detection antibody: 80847-7-PBS. Standard: Eg31375. Range: 0.313-20 ng/mL