

For Research Use Only

SLC6A6/TAUT Recombinant Matched Antibody Pair, PBS Only



Catalog Number:MP00949-2

Capture Antibody Information

Catalog Number:
84021-4-PBS

Host:
Rabbit

Isotype:
IgG

Purification Method:
Protein A purification

Clone ID:
241114H2

Reactivity:
human

GenBank:
BC137128

Immunogen Catalog Number:
Ag24935

Conjugate:
Unconjugated

Full name:
solute carrier family 6
(neurotransmitter transporter,
taurine), member 6

Gene ID:
6533

Detection Antibody Information

Catalog Number:
84021-3-PBS

Host:
Rabbit

Isotype:
IgG

Purification Method:
Protein A purification

Clone ID:
241114D3

Reactivity:
human

GenBank:
BC137128

Immunogen Catalog Number:
Ag24935

Conjugate:
Unconjugated

Full name:
solute carrier family 6
(neurotransmitter transporter,
taurine), member 6

Gene ID:
6533

Applications

Tested Applications:
Sandwich ELISA

Range:
0.313-20 ng/mL (Sandwich ELISA)

Recommended Dilutions:
It is recommended that this reagent should be titrated in each testing system to obtain optimal results.

Product Information

MP00949-2 targets SLC6A6/TAUT in immunoassays as a matched antibody pair. Validated in Sandwich ELISA.

Capture antibody: SLC6A6 Recombinant antibody, PBS Only (Capture) 84021-4-PBS (241114H2). 100 µg. Concentration 1 mg/ml.

Detection antibody: SLC6A6 Recombinant antibody, PBS Only (Detector) 84021-3-PBS (241114D3). 100 µg. Concentration 1 mg/ml.

Alternative SLC6A6/TAUT matched antibody pairs: MP00949-1

Unconjugated rabbit recombinant monoclonal antibody pair in PBS only storage buffer at a concentration of 1 mg/mL, ready for conjugation. Created using Proteintech's proprietary in-house recombinant technology. Recombinant production enables unrivalled batch-to-batch consistency, easy scale-up, and future security of supply.

Matched antibody pairs are designed for use in a variety of assays and platforms that require matched antibody pairs.

Antibody use should be optimized for each application and assay.

Storage

Storage:

Store at -80°C.

The product is shipped with ice packs. Upon receipt, store it immediately at -80°C

Storage buffer:

PBS only

For technical support and original validation data for this product please contact:

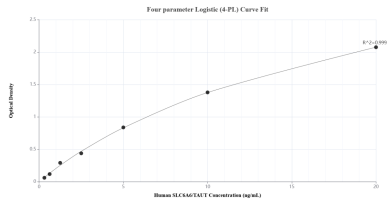
T: 4006900926

E: Proteintech-CN@ptglab.com

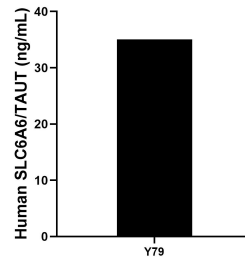
W: ptgcn.com

This product is exclusively available under Proteintech Group brand and is not available to purchase from any other manufacturer.

Selected Validation Data



Sandwich ELISA standard curve of MP00949-2, Human SLC6A6/TAUT Recombinant Matched Antibody Pair - PBS only. 84021-4-PBS was coated to a plate as the capture antibody and incubated with serial dilutions of standard Ag24935. 84021-3-PBS was HRP conjugated as the detection antibody. Range: 0.313-20 ng/mL



The mean SLC6A6/TAUT concentration was determined to be 35.03 ng/mL in Y79 cell extract based on a 2.40 mg/mL extract load.