

NFKB2 Recombinant Matched Antibody Pair, PBS Only

Catalog Number:MP00950-1

Capture Antibody Information

Catalog Number:
84022-4-PBS

Host:
Rabbit

Isotype:
IgG

Purification Method:
Protein A purification

Clone ID:
241126F8

Reactivity:
human

GenBank:
BC002844

Immunogen Catalog Number:
Ag0662

Conjugate:
Unconjugated

Full name:
nuclear factor of kappa light polypeptide gene enhancer in B-cells 2 (p49/p100)

Gene ID:
4791

Detection Antibody Information

Catalog Number:
84022-2-PBS

Host:
Rabbit

Isotype:
IgG

Purification Method:
Protein A purification

Clone ID:
241126D8

Reactivity:
human

GenBank:
BC002844

Immunogen Catalog Number:
Ag0662

Conjugate:
Unconjugated

Full name:
nuclear factor of kappa light polypeptide gene enhancer in B-cells 2 (p49/p100)

Gene ID:
4791

Applications

Tested Applications:

Cytometric bead array, Sandwich ELISA

Range:

0.781-100 ng/mL (Cytometric Bead Array)
12.7-813 pg/mL (Sandwich ELISA)

Recommended Dilutions:

It is recommended that this reagent should be titrated in each testing system to obtain optimal results.

Product Information

MP00950-1 targets NFKB2 in immunoassays as a matched antibody pair. Validated in Cytometric bead array, Sandwich ELISA.

Capture antibody: NFKB2,p100 Recombinant antibody, PBS Only (Capture/Detector) 84022-4-PBS (241126F8). 100 μ g. Concentration 1 mg/mL.

Detection antibody: NFKB2,p100 Recombinant antibody, PBS Only (Detector) 84022-2-PBS (241126D8). 100 μ g. Concentration 1 mg/mL.

Alternative NFKB2 matched antibody pairs: MP00950-2, MP00950-3

Unconjugated rabbit recombinant monoclonal antibody pair in PBS only storage buffer at a concentration of 1 mg/mL, ready for conjugation. Created using Proteintech's proprietary in-house recombinant technology. Recombinant production enables unrivalled batch-to-batch consistency, easy scale-up, and future security of supply.

Matched antibody pairs are designed for use in a variety of assays and platforms that require matched antibody pairs.

Antibody use should be optimized for each application and assay.

Storage

Storage:

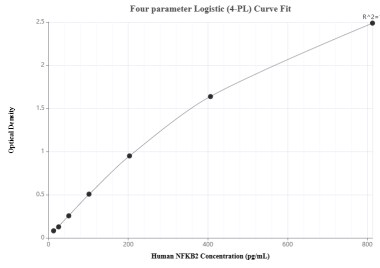
Store at -80°C.

The product is shipped with ice packs. Upon receipt, store it immediately at -80°C

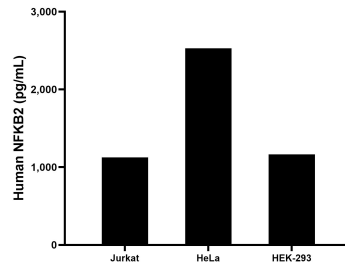
Storage buffer:

PBS only

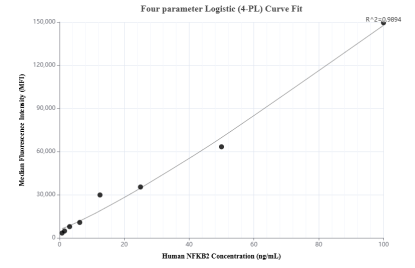
Selected Validation Data



Sandwich ELISA standard curve of MP00950-1, Human NFKB2 Recombinant Matched Antibody Pair - PBS only. 84022-4-PBS was coated to a plate as the capture antibody and incubated with serial dilutions of standard Ag0662. 84022-2-PBS was HRP conjugated as the detection antibody. Range: 12.7-813 pg/mL



The mean NFKB2 concentration was determined to be 1,125.5 pg/mL in Jurkat cell extract based on a 2.3 mg/mL extract load, 2,530.2 pg/mL in HeLa cell extract based on a 1.5 mg/mL extract load and 1,165.1 pg/mL in HEK-293 cell extract based on a 2.0 mg/mL extract load.



Cytometric bead array standard curve of MP00950-1, NFKB2 Recombinant Matched Antibody Pair, PBS Only. Capture antibody: 84022-4-PBS. Detection antibody: 84022-2-PBS. Standard: Ag0662. Range: 0.781-100 ng/mL