

SRP54 Recombinant Matched Antibody Pair, PBS Only

Catalog Number: MP00955-4

Capture Antibody Information

Catalog Number:
84014-2-PBS
Host:
Rabbit
Isotype:
IgG
Purification Method:
Protein A purification

Clone ID:
241125C4
Reactivity:
human
GenBank:
BC003389
Immunogen Catalog Number:
Ag2327

Conjugate:
Unconjugated
Full name:
signal recognition particle 54kDa
Gene ID:
6729

Detection Antibody Information

Catalog Number:
84014-5-PBS
Host:
Rabbit
Isotype:
IgG
Purification Method:
Protein A purification

Clone ID:
241125D6
Reactivity:
human, mouse
GenBank:
BC003389
Immunogen Catalog Number:
Ag2327

Conjugate:
Unconjugated
Full name:
signal recognition particle 54kDa
Gene ID:
6729

Applications

Tested Applications:
Sandwich ELISA

Range:
0.313-20 ng/mL (Sandwich ELISA)

Recommended Dilutions:
It is recommended that this reagent should be titrated in each testing system to obtain optimal results.

Product Information

MP00955-4 targets SRP54 in immunoassays as a matched antibody pair. Validated in Sandwich ELISA.

Capture antibody: SRP54 Recombinant antibody, PBS Only (Capture/Detector) 84014-2-PBS (241125C4). 100 µg. Concentration 1 mg/ml.

Detection antibody: SRP54 Recombinant antibody, PBS Only (Detector) 84014-5-PBS (241125D6). 100 µg. Concentration 1 mg/ml.

Alternative SRP54 matched antibody pairs: MP00955-1, MP00955-2, MP00955-3

Unconjugated rabbit recombinant monoclonal antibody pair in PBS only storage buffer at a concentration of 1 mg/mL, ready for conjugation. Created using Proteintech's proprietary in-house recombinant technology. Recombinant production enables unrivalled batch-to-batch consistency, easy scale-up, and future security of supply.

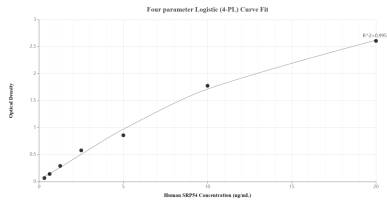
Matched antibody pairs are designed for use in a variety of assays and platforms that require matched antibody pairs.

Antibody use should be optimized for each application and assay.

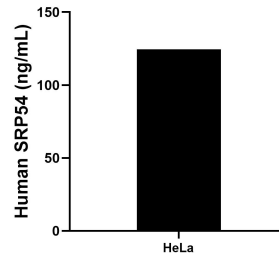
Storage

Storage:
Store at -80°C.
The product is shipped with ice packs. Upon receipt, store it immediately at -80°C
Storage buffer:
PBS only

Selected Validation Data



Sandwich ELISA standard curve of MP00955-4, Human SRP54 Recombinant Matched Antibody Pair - PBS only. 84014-2-PBS was coated to a plate as the capture antibody and incubated with serial dilutions of standard Ag2327. 84014-5-PBS was HRP conjugated as the detection antibody. Range: 0.313-20 ng/mL



The mean SRP54 concentration was determined to be 124.39 ng/mL in HeLa cell extract based on a 1.20 mg/mL extract load.