

For Research Use Only

# Siglec-8 Recombinant Matched Antibody Pair, PBS Only



Catalog Number:MP00960-4

## Capture Antibody Information

Catalog Number:  
84026-2-PBS

Host:  
Rabbit

Isotype:  
IgG

Purification Method:  
Protein A purification

Clone ID:  
241276A8

Reactivity:  
human

GenBank:  
BC053319

Conjugate:  
Unconjugated

Full name:  
sialic acid binding Ig-like lectin 8

Gene ID:  
27181

## Detection Antibody Information

Catalog Number:  
84026-1-PBS

Host:  
Rabbit

Isotype:  
IgG

Purification Method:  
Protein A purification

Clone ID:  
241275D7

Reactivity:  
human

GenBank:  
BC053319

Conjugate:  
Unconjugated

Full name:  
sialic acid binding Ig-like lectin 8

Gene ID:  
27181

## Applications

Tested Applications:  
Sandwich ELISA

Range:  
0.313-20 ng/mL (Sandwich ELISA)

Recommended Dilutions:  
It is recommended that this reagent should be titrated in each testing system to obtain optimal results.

## Product Information

MP00960-4 targets Siglec-8 in immunoassays as a matched antibody pair. Validated in Sandwich ELISA.

Capture antibody: Siglec-8 Recombinant antibody, PBS Only (Capture) 84026-2-PBS (241276A8). 100  $\mu$ g. Concentration 1 mg/ml.

Detection antibody: Siglec-8 Recombinant antibody, PBS Only (Capture/Detector) 84026-1-PBS (241275D7). 100  $\mu$ g. Concentration 1 mg/ml.

Alternative Siglec-8 matched antibody pairs: MP00960-1, MP00960-2, MP00960-3

Unconjugated rabbit recombinant monoclonal antibody pair in PBS only storage buffer at a concentration of 1 mg/mL, ready for conjugation. Created using Proteintech's proprietary in-house recombinant technology. Recombinant production enables unrivalled batch-to-batch consistency, easy scale-up, and future security of supply.

Matched antibody pairs are designed for use in a variety of assays and platforms that require matched antibody pairs.

Antibody use should be optimized for each application and assay.

## Storage

Storage:

Store at -80°C.

**The product is shipped with ice packs. Upon receipt, store it immediately at -80°C**

Storage buffer:

PBS only

For technical support and original validation data for this product please contact:

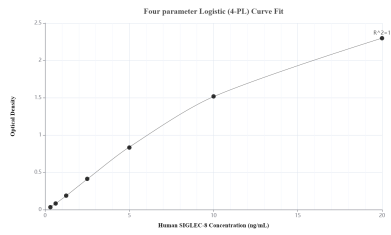
T: 4006900926

E: [Proteintech-CN@ptglab.com](mailto:Proteintech-CN@ptglab.com)

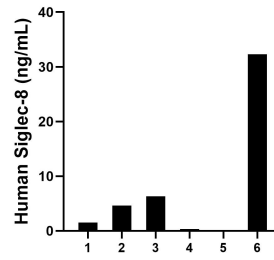
W: [ptgcn.com](http://ptgcn.com)

**This product is exclusively available under Proteintech Group brand and is not available to purchase from any other manufacturer.**

## Selected Validation Data



Sandwich ELISA standard curve of MP00960-4, Human Siglec-8 Recombinant Matched Antibody Pair - PBS only. 84026-2-PBS was coated to a plate as the capture antibody and incubated with serial dilutions of standard RPO2311. 84026-1-PBS was HRP conjugated as the detection antibody. Range: 0.313-20 ng/mL.



Serum of six individual healthy human donors was measured. The Siglec-8 concentration of detected samples was determined to be 7.56 ng/mL with a range of 0.19-32.32 ng/mL.