

For Research Use Only

ABR Recombinant Matched Antibody Pair, PBS Only



Catalog Number:MP00961-4

Capture Antibody Information

Catalog Number:

84011-4-PBS

Host:

Rabbit

Isotype:

IgG

Purification Method:

Protein A purification

Clone ID:

241121G12

Reactivity:

human

GenBank:

NM_021962

Immunogen Catalog Number:

Ag29522

Conjugate:

Unconjugated

Full name:

active BCR-related gene

Gene ID:

29

Detection Antibody Information

Catalog Number:

84011-1-PBS

Host:

Rabbit

Isotype:

IgG

Purification Method:

Protein A purification

Clone ID:

241121B4

Reactivity:

human

GenBank:

NM_021962

Immunogen Catalog Number:

Ag29522

Conjugate:

Unconjugated

Full name:

active BCR-related gene

Gene ID:

29

Applications

Tested Applications:

Sandwich ELISA

Range:

3.91-2500 pg/mL (Sandwich ELISA)

Recommended Dilutions:

It is recommended that this reagent should be titrated in each testing system to obtain optimal results.

Product Information

MP00961-4 targets ABR in immunoassays as a matched antibody pair. Validated in Sandwich ELISA.

Capture antibody: ABR Recombinant antibody, PBS Only (Capture) 84011-4-PBS (241121G12). 100 μ g. Concentration 1 mg/ml.

Detection antibody: ABR Recombinant antibody, PBS Only (Capture/Detector) 84011-1-PBS (241121B4). 100 μ g. Concentration 1 mg/ml.

Alternative ABR matched antibody pairs: MP00961-1, MP00961-2, MP00961-3

Unconjugated rabbit recombinant monoclonal antibody pair in PBS only storage buffer at a concentration of 1 mg/mL, ready for conjugation. Created using Proteintech's proprietary in-house recombinant technology. Recombinant production enables unrivalled batch-to-batch consistency, easy scale-up, and future security of supply.

Matched antibody pairs are designed for use in a variety of assays and platforms that require matched antibody pairs.

Antibody use should be optimized for each application and assay.

Storage

Storage:

Store at -80°C.

The product is shipped with ice packs. Upon receipt, store it immediately at -80°C

Storage buffer:

PBS only

For technical support and original validation data for this product please contact:

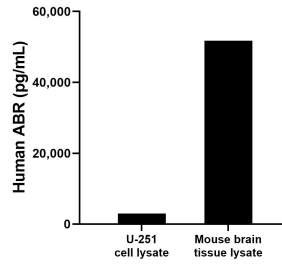
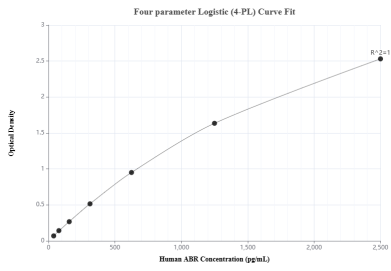
T: 4006900926

E: Proteintech-CN@ptglab.com

W: ptgcn.com

This product is exclusively available under Proteintech Group brand and is not available to purchase from any other manufacturer.

Selected Validation Data



Sandwich ELISA standard curve of MP00961-4, Human ABR Recombinant Matched Antibody Pair - PBS only. 84011-4-PBS was coated to a plate as the capture antibody and incubated with serial dilutions of standard Ag29522. 84011-1-PBS was HRP conjugated as the detection antibody. Range: 3.91-2500 pg/mL

U-251 cell lysate and mouse brain tissue lysate were measured. The human ABR concentration of detected samples was determined to be 2,939.5 pg/mL (based on a 3.30 mg/mL extract load) in U-251 cell lysate and 51,727.8 pg/mL (based on a 4.60 mg/mL extract load) in mouse brain tissue lysate.