

For Research Use Only

KIF5A Recombinant Matched Antibody Pair, PBS Only



Catalog Number:MP00967-4

Capture Antibody Information

Catalog Number:
84013-3-PBS

Host:
Rabbit

Isotype:
IgG

Purification Method:
Protein A purification

Clone ID:
241124F12

Reactivity:
human

GenBank:
BC146670

Immunogen Catalog Number:
Ag15518

Conjugate:
Unconjugated

Full name:
kinesin family member 5A

Gene ID:
3798

Detection Antibody Information

Catalog Number:
84013-6-PBS

Host:
Rabbit

Isotype:
IgG

Purification Method:
Protein A purification

Clone ID:
241124G5

Reactivity:
human

GenBank:
BC146670

Immunogen Catalog Number:
Ag15518

Conjugate:
Unconjugated

Full name:
kinesin family member 5A

Gene ID:
3798

Applications

Tested Applications:
Sandwich ELISA

Range:
0.313-20 ng/mL (Sandwich ELISA)

Recommended Dilutions:
It is recommended that this reagent should be titrated in each testing system to obtain optimal results.

Product Information

MP00967-4 targets KIF5A in immunoassays as a matched antibody pair. Validated in Sandwich ELISA.

Capture antibody: KIF5A Recombinant antibody, PBS Only (Capture/Detector) 84013-3-PBS (241124F12). 100 μ g. Concentration 1 mg/mL.

Detection antibody: KIF5A Recombinant antibody, PBS Only (Detector) 84013-6-PBS (241124G5). 100 μ g. Concentration 1 mg/mL.

Alternative KIF5A matched antibody pairs: MP00967-1, MP00967-2, MP00967-3

Unconjugated rabbit recombinant monoclonal antibody pair in PBS only storage buffer at a concentration of 1 mg/mL, ready for conjugation. Created using Proteintech's proprietary in-house recombinant technology. Recombinant production enables unrivalled batch-to-batch consistency, easy scale-up, and future security of supply.

Matched antibody pairs are designed for use in a variety of assays and platforms that require matched antibody pairs.

Antibody use should be optimized for each application and assay.

Storage

Storage:

Store at -80°C.

The product is shipped with ice packs. Upon receipt, store it immediately at -80°C

Storage buffer:

PBS only

For technical support and original validation data for this product please contact:

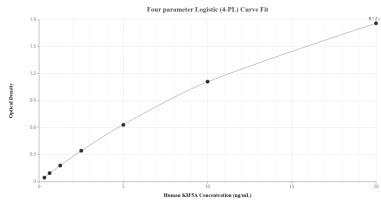
T: 4006900926

E: Proteintech-CN@ptglab.com

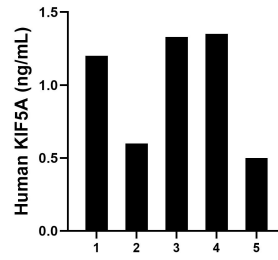
W: ptgcn.com

This product is exclusively available under Proteintech Group brand and is not available to purchase from any other manufacturer.

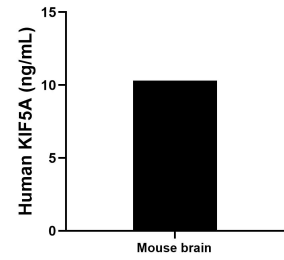
Selected Validation Data



Sandwich ELISA standard curve of MP00967-4, Human KIF5A Recombinant Matched Antibody Pair - PBS only. 84013-3-PBS was coated to a plate as the capture antibody and incubated with serial dilutions of standard Ag15518. 84013-6-PBS was HRP conjugated as the detection antibody. Range: 0.313-20 ng/mL.



Serum of five individual healthy human donors was measured. The KIF5A concentration of detected samples was determined to be 1.00 ng/mL with a range of 0.50 - 1.35 ng/mL.



The mean KIF5A concentration was determined to be 10.30 ng/mL in mouse brain cell extract based on a 4.60 mg/mL extract load.