

For Research Use Only

ABCC3 Recombinant Matched Antibody Pair, PBS Only



Catalog Number:MP00973-2

Capture Antibody Information

Catalog Number:
84057-1-PBS
Host:
Rabbit
Isotype:
IgG
Purification Method:
Protein A purification

Clone ID:
241209B9
Reactivity:
human
GenBank:
BC137348
Immunogen Catalog Number:
Ag19786

Conjugate:
Unconjugated
Full name:
ATP-binding cassette, sub-family C (CFTR/MRP), member 3
Gene ID:
8714

Detection Antibody Information

Catalog Number:
84057-3-PBS
Host:
Rabbit
Isotype:
IgG
Purification Method:
Protein A purification

Clone ID:
241209D1
Reactivity:
human
GenBank:
BC137348
Immunogen Catalog Number:
Ag19786

Conjugate:
Unconjugated
Full name:
ATP-binding cassette, sub-family C (CFTR/MRP), member 3
Gene ID:
8714

Applications

Tested Applications:
Sandwich ELISA

Range:
78.1-5000 pg/mL (Sandwich ELISA)

Recommended Dilutions:
It is recommended that this reagent should be titrated in each testing system to obtain optimal results.

Product Information

MP00973-2 targets ABCC3 in immunoassays as a matched antibody pair. Validated in Sandwich ELISA.

Capture antibody: MRP3/ABCC3 Recombinant antibody, PBS Only (Capture) 84057-1-PBS (241209B9). 100 µg. Concentration 1 mg/ml.

Detection antibody: ABCC3 Recombinant antibody, PBS Only (Detector) 84057-3-PBS (241209D1). 100 µg. Concentration 1 mg/ml.

Alternative ABCC3 matched antibody pairs: MP00973-1, MP50255-1

Unconjugated rabbit recombinant monoclonal antibody pair in PBS only storage buffer at a concentration of 1 mg/mL, ready for conjugation. Created using Proteintech's proprietary in-house recombinant technology. Recombinant production enables unrivalled batch-to-batch consistency, easy scale-up, and future security of supply.

Matched antibody pairs are designed for use in a variety of assays and platforms that require matched antibody pairs.

Antibody use should be optimized for each application and assay.

Storage

Storage:
Store at -80°C.
The product is shipped with ice packs. Upon receipt, store it immediately at -80°C
Storage buffer:
PBS only

For technical support and original validation data for this product please contact:

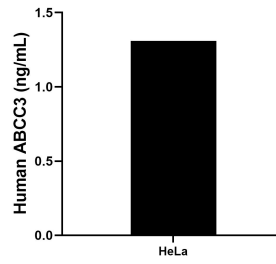
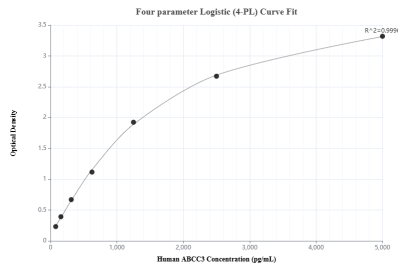
T: 4006900926

E: Proteintech-CN@ptglab.com

W: ptgcn.com

This product is exclusively available under Proteintech Group brand and is not available to purchase from any other manufacturer.

Selected Validation Data



Sandwich ELISA standard curve of MP00973-2, Human ABCC3 Recombinant Matched Antibody Pair - PBS only. 84057-1-PBS was coated to a plate as the capture antibody and incubated with serial dilutions of standard Ag19786. 84057-3-PBS was HRP conjugated as the detection antibody. Range: 78.1-5000 pg/mL

The mean ABCC3 concentration was determined to be 1.31 ng/mL in HeLa cell extract based on a 2.0 mg/mL extract load.