

For Research Use Only

# CD36 Recombinant Matched Antibody Pair, PBS Only



Catalog Number:MP00992-4

## Capture Antibody Information

Catalog Number:  
84078-3-PBS

Host:  
Rabbit

Isotype:  
IgG

Purification Method:  
Protein A purification

Clone ID:  
241262F8

Reactivity:  
human

GenBank:  
NM\_001001548.3

Conjugate:  
Unconjugated

Full name:  
CD36 molecule (thrombospondin receptor)

Gene ID:  
948

## Detection Antibody Information

Catalog Number:  
84078-5-PBS

Host:  
Rabbit

Isotype:  
IgG

Purification Method:  
Protein A purification

Clone ID:  
241262C5

Reactivity:  
human

GenBank:  
NM\_001001548.3

Conjugate:  
Unconjugated

Full name:  
CD36 molecule (thrombospondin receptor)

Gene ID:  
948

## Applications

Tested Applications:  
Sandwich ELISA

Range:  
7.81-250 ng/mL (Sandwich ELISA)

Recommended Dilutions:  
It is recommended that this reagent should be titrated in each testing system to obtain optimal results.

## Product Information

MP00992-4 targets CD36 in immunoassays as a matched antibody pair. Validated in Sandwich ELISA.

Capture antibody: CD36 Recombinant antibody, PBS Only (Capture/Detector) 84078-3-PBS (241262F8). 100 µg. Concentration 1 mg/mL.

Detection antibody: CD36 Recombinant antibody, PBS Only (Detector) 84078-5-PBS (241262C5). 100 µg. Concentration 1 mg/mL.

Alternative CD36 matched antibody pairs: MP00992-1, MP00992-2, MP00992-3

Unconjugated rabbit recombinant monoclonal antibody pair in PBS only storage buffer at a concentration of 1 mg/mL, ready for conjugation. Created using Proteintech's proprietary in-house recombinant technology. Recombinant production enables unrivalled batch-to-batch consistency, easy scale-up, and future security of supply.

Matched antibody pairs are designed for use in a variety of assays and platforms that require matched antibody pairs.

Antibody use should be optimized for each application and assay.

## Storage

Storage:

Store at -80°C.

**The product is shipped with ice packs. Upon receipt, store it immediately at -80°C**

Storage buffer:

PBS only

For technical support and original validation data for this product please contact:

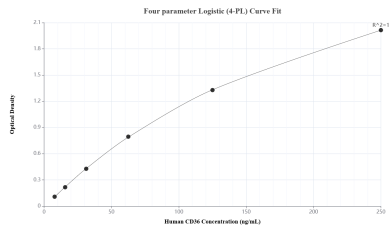
T: 4006900926

E: [Proteintech-CN@ptglab.com](mailto:Proteintech-CN@ptglab.com)

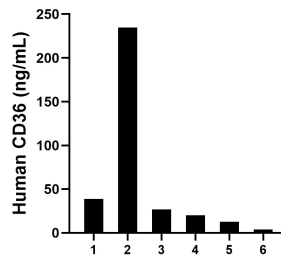
W: [ptgcn.com](http://ptgcn.com)

**This product is exclusively available under Proteintech Group brand and is not available to purchase from any other manufacturer.**

## Selected Validation Data



Sandwich ELISA standard curve of MP00992-4, Human CD36 Recombinant Matched Antibody Pair - PBS only. 84078-3-PBS was coated to a plate as the capture antibody and incubated with serial dilutions of standard Eg1070. 84078-5-PBS was HRP conjugated as the detection antibody. Range: 7.81-250 ng/mL.



Serum of six individual healthy human donors was measured. The CD36 concentration of detected samples was determined to be 80.10 ng/mL with a range of 3.74-234.72 ng/mL.