

TRP1 Recombinant Matched Antibody Pair, PBS Only

Catalog Number:MP00997-3

Capture Antibody Information

Catalog Number: 84082-4-PBS	Clone ID: 241242C2	Conjugate: Unconjugated
Host: Rabbit	Reactivity: human	Full name: tyrosinase-related protein 1
Isotype: IgG	GenBank: BC052608	Gene ID: 7306
Purification Method: Protein A purification	Immunogen Catalog Number: Ag10166	

Detection Antibody Information

Catalog Number: 84082-2-PBS	Clone ID: 241242D7	Conjugate: Unconjugated
Host: Rabbit	Reactivity: human	Full name: tyrosinase-related protein 1
Isotype: IgG	GenBank: BC052608	Gene ID: 7306
Purification Method: Protein A purification	Immunogen Catalog Number: Ag10166	

Applications

Tested Applications: Sandwich ELISA	Range: 1.56-100 ng/mL (Sandwich ELISA)	Recommended Dilutions: It is recommended that this reagent should be titrated in each testing system to obtain optimal results.
---	--	---

Product Information

MP00997-3 targets TRP1 in immunoassays as a matched antibody pair. Validated in Sandwich ELISA.

Capture antibody: TRP1 Recombinant antibody, PBS Only (Capture) 84082-4-PBS (241242C2). 100 µg. Concentration 1 mg/ml.

Detection antibody: TRP1 Recombinant antibody, PBS Only (Detector) 84082-2-PBS (241242D7). 100 µg. Concentration 1 mg/ml.

Alternative TRP1 matched antibody pairs: MP00997-1, MP00997-2

Unconjugated rabbit recombinant monoclonal antibody pair in PBS only storage buffer at a concentration of 1 mg/mL, ready for conjugation. Created using Proteintech's proprietary in-house recombinant technology. Recombinant production enables unrivalled batch-to-batch consistency, easy scale-up, and future security of supply.

Matched antibody pairs are designed for use in a variety of assays and platforms that require matched antibody pairs.

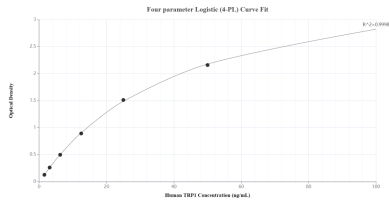
Antibody use should be optimized for each application and assay.

Storage

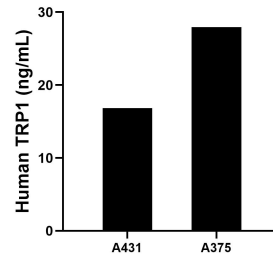
Storage:
Store at -80°C.
The product is shipped with ice packs. Upon receipt, store it immediately at -80°C

Storage buffer:
PBS only

Selected Validation Data



Sandwich ELISA standard curve of MP00997-3, Human TRP1 Recombinant Matched Antibody Pair - PBS only. 84082-4-PBS was coated to a plate as the capture antibody and incubated with serial dilutions of standard Ag10166. 84082-2-PBS was HRP conjugated as the detection antibody. Range: 1.56-100 ng/mL.



The mean TRP1 concentration was determined to be 16.83 ng/mL in A431 cell extract based on a 4.00 mg/mL extract load and 27.93 ng/mL in A375 cell extract based on a 4.60 mg/mL extract load.