

For Research Use Only

# SLC17A6 Recombinant Matched Antibody Pair, PBS Only



Catalog Number:MP00998-1

## Capture Antibody Information

Catalog Number:  
84083-1-PBS

Host:  
Rabbit

Isotype:  
IgG

Purification Method:  
Protein A purification

Clone ID:  
241255A2

Reactivity:  
human

GenBank:  
NM\_020346

Immunogen Catalog Number:  
Ag29565

Conjugate:  
Unconjugated

Full name:  
solute carrier family 17 (sodium-dependent inorganic phosphate cotransporter), member 6

Gene ID:  
57084

## Detection Antibody Information

Catalog Number:  
84083-2-PBS

Host:  
Rabbit

Isotype:  
IgG

Purification Method:  
Protein A purification

Clone ID:  
241255B5

Reactivity:  
human

GenBank:  
NM\_020346

Immunogen Catalog Number:  
Ag29565

Conjugate:  
Unconjugated

Full name:  
solute carrier family 17 (sodium-dependent inorganic phosphate cotransporter), member 6

Gene ID:  
57084

## Applications

Tested Applications:  
Cytometric bead array

Range:  
0.313-40 ng/mL (Cytometric Bead Array)

Recommended Dilutions:  
It is recommended that this reagent should be titrated in each testing system to obtain optimal results.

## Product Information

MP00998-1 targets SLC17A6 in immunoassays as a matched antibody pair. Validated in Cytometric bead array.

Capture antibody: SLC17A6 Recombinant antibody, PBS Only (Capture) 84083-1-PBS (241255A2). 100 µg. Concentration 1 mg/ml.

Detection antibody: SLC17A6 Recombinant antibody, PBS Only (Detector) 84083-2-PBS (241255B5). 100 µg. Concentration 1 mg/ml.

Unconjugated rabbit recombinant monoclonal antibody pair in PBS only storage buffer at a concentration of 1 mg/mL, ready for conjugation. Created using Proteintech's proprietary in-house recombinant technology. Recombinant production enables unrivalled batch-to-batch consistency, easy scale-up, and future security of supply.

Matched antibody pairs are designed for use in a variety of assays and platforms that require matched antibody pairs.

Antibody use should be optimized for each application and assay.

## Storage

Storage:  
Store at -80°C.

The product is shipped with ice packs. Upon receipt, store it immediately at -80°C

Storage buffer:  
PBS only

For technical support and original validation data for this product please contact:

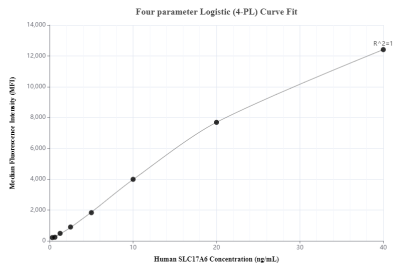
T: 4006900926

E: Proteintech-CN@ptglab.com

W: ptgcn.com

This product is exclusively available under Proteintech Group brand and is not available to purchase from any other manufacturer.

## Selected Validation Data



Cytometric bead array standard curve of MP00998-1, SLC17A6 Recombinant Matched Antibody Pair, PBS Only. Capture antibody: 84083-1-PBS. Detection antibody: 84083-2-PBS. Standard: Ag29565. Range: 0.313-40 ng/mL.