

For Research Use Only

SP6 Recombinant Matched Antibody Pair, PBS Only



Catalog Number:MP01005-3

Capture Antibody Information

Catalog Number:
84088-3-PBS

Host:
Rabbit

Isotype:
IgG

Purification Method:
Protein A purification

Clone ID:
241169E6

Reactivity:
human

GenBank:
BC103951

Immunogen Catalog Number:
Ag29372

Conjugate:
Unconjugated

Full name:
Sp6 transcription factor

Gene ID:
80320

Detection Antibody Information

Catalog Number:
84088-2-PBS

Host:
Rabbit

Isotype:
IgG

Purification Method:
Protein A purification

Clone ID:
241169E1

Reactivity:
human

GenBank:
BC103951

Immunogen Catalog Number:
Ag29372

Conjugate:
Unconjugated

Full name:
Sp6 transcription factor

Gene ID:
80320

Applications

Tested Applications:
Cytometric bead array

Range:
0.781-100 ng/mL (Cytometric Bead Array)

Recommended Dilutions:
It is recommended that this reagent should be titrated in each testing system to obtain optimal results.

Product Information

MP01005-3 targets SP6 in immunoassays as a matched antibody pair. Validated in Cytometric bead array.

Capture antibody: SP6 Recombinant antibody, PBS Only (Capture) 84088-3-PBS (241169E6). 100 μ g. Concentration 1 mg/ml.

Detection antibody: SP6 Recombinant antibody, PBS Only (Detector) 84088-2-PBS (241169E1). 100 μ g. Concentration 1 mg/ml.

Alternative SP6 matched antibody pairs: MP01005-1, MP01005-2

Unconjugated rabbit recombinant monoclonal antibody pair in PBS only storage buffer at a concentration of 1 mg/mL, ready for conjugation. Created using Proteintech's proprietary in-house recombinant technology. Recombinant production enables unrivalled batch-to-batch consistency, easy scale-up, and future security of supply.

Matched antibody pairs are designed for use in a variety of assays and platforms that require matched antibody pairs.

Antibody use should be optimized for each application and assay.

Storage

Storage:

Store at -80°C.

The product is shipped with ice packs. Upon receipt, store it immediately at -80°C

Storage buffer:

PBS only

For technical support and original validation data for this product please contact:

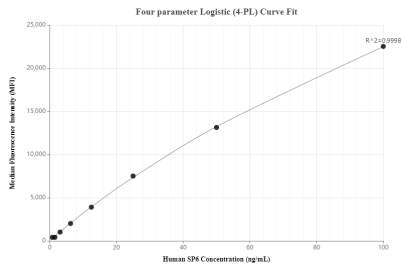
T: 4006900926

E: Proteintech-CN@ptglab.com

W: ptgcn.com

This product is exclusively available under Proteintech Group brand and is not available to purchase from any other manufacturer.

Selected Validation Data



Cytometric bead array standard curve of MP01005-3, SP6 Recombinant Matched Antibody Pair, PBS Only. Capture antibody: 84088-3-PBS. Detection antibody: 84088-2-PBS. Standard: Ag29372. Range: 0.781-100 ng/mL.