

For Research Use Only

# EPCAM/CD326 Recombinant Matched Antibody Pair, PBS Only



Catalog Number:MP01009-4

## Capture Antibody Information

Catalog Number:  
84073-7-PBS

Host:  
Rabbit

Isotype:  
IgG

Purification Method:  
Protein A purification

Clone ID:  
241243F8

Reactivity:  
human

GenBank:  
NM\_002354.3

Conjugate:  
Unconjugated

Full name:  
epithelial cell adhesion molecule

Gene ID:  
4072

## Detection Antibody Information

Catalog Number:  
84073-4-PBS

Host:  
Rabbit

Isotype:  
IgG

Purification Method:  
Protein A purification

Clone ID:  
241243E4

Reactivity:  
human

GenBank:  
NM\_002354.3

Conjugate:  
Unconjugated

Full name:  
epithelial cell adhesion molecule

Gene ID:  
4072

## Applications

Tested Applications:  
Sandwich ELISA

Range:  
19.5-625 pg/mL (Sandwich ELISA)

Recommended Dilutions:  
It is recommended that this reagent should be titrated in each testing system to obtain optimal results.

## Product Information

MP01009-4 targets EPCAM/CD326 in immunoassays as a matched antibody pair. Validated in Sandwich ELISA.

Capture antibody: EpCAM/TROP1 Recombinant antibody, PBS Only (Capture) 84073-7-PBS (241243F8). 100 µg. Concentration 1 mg/ml.

Detection antibody: EPCAM/CD326 Recombinant antibody, PBS Only (Detector) 84073-4-PBS (241243E4). 100 µg. Concentration 1 mg/ml.

Alternative EPCAM/CD326 matched antibody pairs: MP01009-1, MP01009-2, MP01009-3, MP01344-1, MP01344-2, MP01344-3, MP50309-3

Unconjugated rabbit recombinant monoclonal antibody pair in PBS only storage buffer at a concentration of 1 mg/ml, ready for conjugation. Created using Proteintech's proprietary in-house recombinant technology. Recombinant production enables unrivalled batch-to-batch consistency, easy scale-up, and future security of supply.

Matched antibody pairs are designed for use in a variety of assays and platforms that require matched antibody pairs.

Antibody use should be optimized for each application and assay.

## Storage

Storage:  
Store at -80°C.

The product is shipped with ice packs. Upon receipt, store it immediately at -80°C

Storage buffer:  
PBS only

For technical support and original validation data for this product please contact:

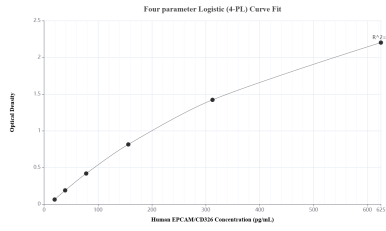
T: 4006900926

E: Proteintech-CN@ptglab.com

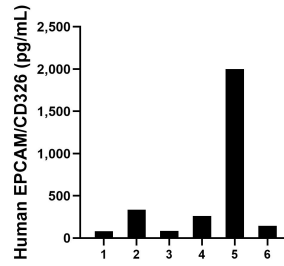
W: ptgcn.com

This product is exclusively available under Proteintech Group brand and is not available to purchase from any other manufacturer.

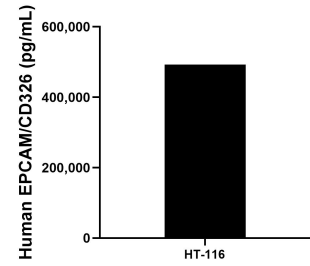
## Selected Validation Data



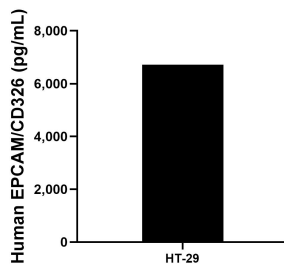
Sandwich ELISA standard curve of MP01009-4, Human EPCAM/CD326 Recombinant Matched Antibody Pair - PBS only. 84073-7-PBS was coated to a plate as the capture antibody and incubated with serial dilutions of standard Eg1370. 84073-4-PBS was HRP conjugated as the detection antibody. Range: 19.5-625 pg/mL.



Serum of six individual healthy human donors was measured. The EPCAM/CD326 concentration of detected samples was determined to be 484.9 pg/mL with a range of 81.5-2002.2 pg/mL.



The mean EPCAM/CD326 concentration was determined to be 492922.2 pg/mL in HT-116 cell extract based on a 2.0 mg/mL extract load.



HT-29 were cultured in DMEM supplemented with 10% fetal bovine serum, 2.5 mM L-glutamine, 100 U/mL penicillin, and 100 µg/mL streptomycin sulfate. An aliquot of the cell culture supernate was removed, assayed for human EPCAM/CD326, and measured 6718.5 pg/mL.