

For Research Use Only

Mouse IGFBP2 Recombinant Matched Antibody Pair, PBS Only



Catalog Number:MP01011-1

Capture Antibody Information

Catalog Number:
84092-1-PBS
Host:
Rabbit
Isotype:
IgG
Purification Method:
Protein A purification

Clone ID:
241363D12
Reactivity:
human, mouse
GenBank:
NM_008342.3

Conjugate:
Unconjugated
Full name:
insulin-like growth factor binding protein 2
Gene ID:
16008

Detection Antibody Information

Catalog Number:
84092-2-PBS
Host:
Rabbit
Isotype:
IgG
Purification Method:
Protein A purification

Clone ID:
241363G4
Reactivity:
mouse
GenBank:
NM_008342.3

Conjugate:
Unconjugated
Full name:
insulin-like growth factor binding protein 2
Gene ID:
16008

Applications

Tested Applications:
Cytometric bead array, Sandwich ELISA

Range:
1.563-100 ng/mL (Cytometric Bead Array)
0.313-20 ng/mL (Sandwich ELISA)

Recommended Dilutions:
It is recommended that this reagent should be titrated in each testing system to obtain optimal results.

Product Information

MP01011-1 targets IGFBP2 in immunoassays as a matched antibody pair. Validated in Cytometric bead array, Sandwich ELISA.

Capture antibody: Mouse IGFBP2 Recombinant antibody, PBS Only (Capture) 84092-1-PBS (241363D12). 100 µg. Concentration 1 mg/ml.

Detection antibody: Mouse IGFBP2 Recombinant antibody, PBS Only (Detector) 84092-2-PBS (241363G4). 100 µg. Concentration 1 mg/ml.

Alternative IGFBP2 matched antibody pairs: MP00322-1, MP00322-2

Unconjugated rabbit recombinant monoclonal antibody pair in PBS only storage buffer at a concentration of 1 mg/mL, ready for conjugation. Created using Proteintech's proprietary in-house recombinant technology. Recombinant production enables unrivalled batch-to-batch consistency, easy scale-up, and future security of supply.

Matched antibody pairs are designed for use in a variety of assays and platforms that require matched antibody pairs.

Antibody use should be optimized for each application and assay.

Storage

Storage:
Store at -80°C.
The product is shipped with ice packs. Upon receipt, store it immediately at -80°C
Storage buffer:
PBS only

For technical support and original validation data for this product please contact:

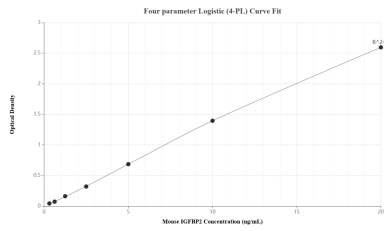
T: 4006900926

E: Proteintech-CN@ptglab.com

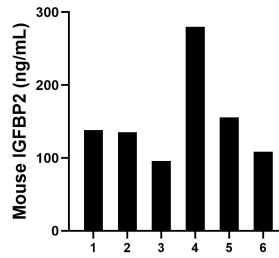
W: ptgcn.com

This product is exclusively available under Proteintech Group brand and is not available to purchase from any other manufacturer.

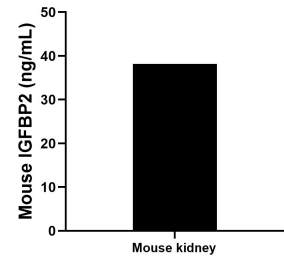
Selected Validation Data



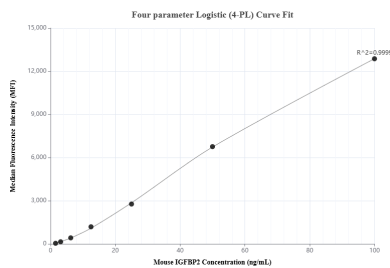
Sandwich ELISA standard curve of MP01011-1, Mouse IGFBP2 Recombinant Matched Antibody Pair - PBS only. 84092-1-PBS was coated to a plate as the capture antibody and incubated with serial dilutions of standard Eg1196. 84092-2-PBS was HRP conjugated as the detection antibody. Range: 0.313-20 ng/mL.



Serum of six mouse was measured. The IGFBP2 concentration of detected samples was determined to be 152.26 ng/mL with a range of 95.84-279.86 ng/mL.



One mouse kidney was cultured for 18 hours in RPMI 1640 supplemented with 10% fetal bovine serum, 50 μ M β -mercaptoethanol, 2 mM L-glutamine, and 100 μ g/mL of streptomycin sulfate. The cells were stimulated with 10 μ g/mL of PHA and 10 ng/mL of PMA. An aliquot of the cell culture supernatant was removed, assayed for mouse IGFBP2 and measured 38.18 ng/mL.



Cytometric bead array standard curve of MP01011-1, MOUSE IGFBP2 Recombinant Matched Antibody Pair, PBS Only. Capture antibody: 84092-1-PBS. Detection antibody: 84092-2-PBS. Standard: Eg1196. Range: 1.563-100 ng/mL.