

For Research Use Only

PPID Recombinant Matched Antibody Pair, PBS Only



Catalog Number:MP01018-4

Capture Antibody Information

Catalog Number: 84115-7-PBS	Clone ID: 241361B10	Conjugate: Unconjugated
Host: Rabbit	Reactivity: human	Full name: peptidylprolyl isomerase D
Isotype: IgG	GenBank: BC030707	Gene ID: 5481
Purification Method: Protein A purification	Immunogen Catalog Number: Ag3409	

Detection Antibody Information

Catalog Number: 84115-2-PBS	Clone ID: 241361B5	Conjugate: Unconjugated
Host: Rabbit	Reactivity: human	Full name: peptidylprolyl isomerase D
Isotype: IgG	GenBank: BC030707	Gene ID: 5481
Purification Method: Protein A purification	Immunogen Catalog Number: Ag3409	

Applications

Tested Applications: Sandwich ELISA	Range: 0.313-20 ng/mL (Sandwich ELISA)	Recommended Dilutions: It is recommended that this reagent should be titrated in each testing system to obtain optimal results.
---	--	---

Product Information

MP01018-4 targets PPID in immunoassays as a matched antibody pair. Validated in Sandwich ELISA.

Capture antibody: PPID Recombinant antibody, PBS Only (Capture) 84115-7-PBS (241361B10). 100 µg. Concentration 1 mg/ml.

Detection antibody: PPID Recombinant antibody, PBS Only (Detector) 84115-2-PBS (241361B5). 100 µg. Concentration 1 mg/ml.

Alternative PPID matched antibody pairs: MP01018-1, MP01018-2, MP01018-3

Unconjugated rabbit recombinant monoclonal antibody pair in PBS only storage buffer at a concentration of 1 mg/mL, ready for conjugation. Created using Proteintech's proprietary in-house recombinant technology. Recombinant production enables unrivalled batch-to-batch consistency, easy scale-up, and future security of supply.

Matched antibody pairs are designed for use in a variety of assays and platforms that require matched antibody pairs.

Antibody use should be optimized for each application and assay.

Storage

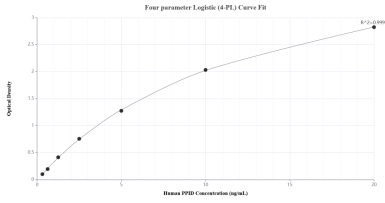
Storage:
Store at -80°C.
The product is shipped with ice packs. Upon receipt, store it immediately at -80°C

Storage buffer:
PBS only

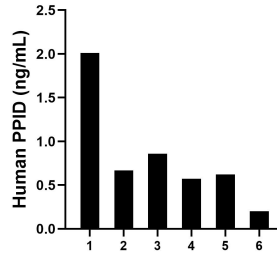
For technical support and original validation data for this product please contact:
T: 4006900926 E: Proteintech-CN@ptglab.com W: ptgcn.com

This product is exclusively available under Proteintech Group brand and is not available to purchase from any other manufacturer.

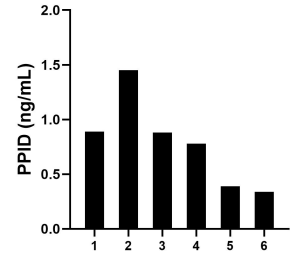
Selected Validation Data



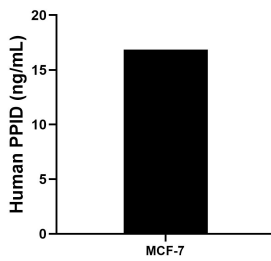
Sandwich ELISA standard curve of MP01018-4, Human PPID Recombinant Matched Antibody Pair - PBS only. 84115-7-PBS was coated to a plate as the capture antibody and incubated with serial dilutions of standard Ag3409. 84115-2-PBS was HRP conjugated as the detection antibody. Range: 0.313-20 ng/mL



Serum of six individual healthy human donors was measured. The PPID concentration of detected samples was determined to be 0.82 ng/mL with a range of 0.20-2.01 ng/mL.



Serum of six rats was measured. The PPID concentration of detected samples was determined to be 0.79 ng/mL with a range of 0.34-1.45 ng/mL.



The mean PPID concentration was determined to be 16.84 ng/mL in MCF-7 cell extract based on a 1.20 mg/mL extract load.