

DPP10 Recombinant Matched Antibody Pair, PBS Only

Catalog Number:MP01035-3

Capture Antibody Information

Catalog Number: 84127-2-PBS	Clone ID: 241446A5	Conjugate: Unconjugated
Host: Rabbit	Reactivity: human, mouse, rat	Full name: dipeptidyl-peptidase 10
Isotype: IgG	GenBank: BC030832	Gene ID: 57628
Purification Method: Protein A purification	Immunogen Catalog Number: Ag3231	

Detection Antibody Information

Catalog Number: 84127-3-PBS	Clone ID: 241446G10	Conjugate: Unconjugated
Host: Rabbit	Reactivity: human	Full name: dipeptidyl-peptidase 10
Isotype: IgG	GenBank: BC030832	Gene ID: 57628
Purification Method: Protein A purification	Immunogen Catalog Number: Ag3231	

Applications

Tested Applications: Sandwich ELISA	Range: 6.25-400 ng/mL (Sandwich ELISA)	Recommended Dilutions: It is recommended that this reagent should be titrated in each testing system to obtain optimal results.
---	--	---

Product Information

MP01035-3 targets DPP10 in immunoassays as a matched antibody pair. Validated in Sandwich ELISA.

Capture antibody: DPP10 Recombinant antibody, PBS Only (Capture/Detector) 84127-2-PBS (241446A5). 100 µg. Concentration 1 mg/ml.

Detection antibody: DPP10 Recombinant antibody, PBS Only (Capture/Detector) 84127-3-PBS (241446G10). 100 µg. Concentration 1 mg/ml.

Alternative DPP10 matched antibody pairs: MP01035-1, MP01035-2

Unconjugated rabbit recombinant monoclonal antibody pair in PBS only storage buffer at a concentration of 1 mg/mL, ready for conjugation. Created using Proteintech's proprietary in-house recombinant technology. Recombinant production enables unrivalled batch-to-batch consistency, easy scale-up, and future security of supply. Matched antibody pairs are designed for use in a variety of assays and platforms that require matched antibody pairs.

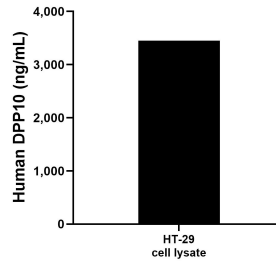
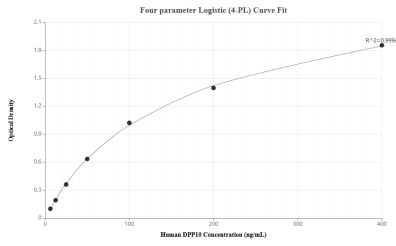
Antibody use should be optimized for each application and assay.

Storage

Storage:
Store at -80°C.
The product is shipped with ice packs. Upon receipt, store it immediately at -80°C

Storage buffer:
PBS only

Selected Validation Data



Sandwich ELISA standard curve of MP01035-3, Human DPP10 Recombinant Matched Antibody Pair - PBS only. 84127-2-PBS was coated to a plate as the capture antibody and incubated with serial dilutions of standard Ag3231. 84127-3-PBS was HRP conjugated as the detection antibody. Range: 6.25-400 ng/mL

HT-29 cell lysate was measured. The human DPP10 concentration of detected samples was determined to be 3,448.25 ng/mL (based on a 4.4 mg/mL extract load).