

For Research Use Only

# CD2 Recombinant Matched Antibody Pair, PBS Only



Catalog Number:MP01045-4

## Capture Antibody Information

Catalog Number:  
84108-5-PBS

Host:  
Rabbit

Isotype:  
IgG

Purification Method:  
Protein A purification

Clone ID:  
241222B8

Reactivity:  
human

GenBank:  
BC033583

Conjugate:  
Unconjugated

Full name:  
CD2 molecule

Gene ID:  
914

## Detection Antibody Information

Catalog Number:  
84108-3-PBS

Host:  
Rabbit

Isotype:  
IgG

Purification Method:  
Protein A purification

Clone ID:  
241222E10

Reactivity:  
human

GenBank:  
BC033583

Conjugate:  
Unconjugated

Full name:  
CD2 molecule

Gene ID:  
914

## Applications

Tested Applications:  
Sandwich ELISA

Range:  
19.5-1250 pg/mL (Sandwich ELISA)

Recommended Dilutions:  
It is recommended that this reagent should be titrated in each testing system to obtain optimal results.

## Product Information

MP01045-4 targets CD2 in immunoassays as a matched antibody pair. Validated in Sandwich ELISA.

Capture antibody: CD2 Recombinant antibody, PBS Only (Capture) 84108-5-PBS (241222B8). 100  $\mu$ g. Concentration 1 mg/mL.

Detection antibody: CD2 Recombinant antibody, PBS Only (Detector) 84108-3-PBS (241222E10). 100  $\mu$ g. Concentration 1 mg/mL.

Alternative CD2 matched antibody pairs: MP01045-1, MP01045-2, MP01045-3, MP01249-1, MP01249-2, MP01249-3

Unconjugated rabbit recombinant monoclonal antibody pair in PBS only storage buffer at a concentration of 1 mg/mL, ready for conjugation. Created using Proteintech's proprietary in-house recombinant technology. Recombinant production enables unrivalled batch-to-batch consistency, easy scale-up, and future security of supply.

Matched antibody pairs are designed for use in a variety of assays and platforms that require matched antibody pairs.

Antibody use should be optimized for each application and assay.

## Storage

Storage:

Store at -80°C.

**The product is shipped with ice packs. Upon receipt, store it immediately at -80°C**

Storage buffer:

PBS only

For technical support and original validation data for this product please contact:

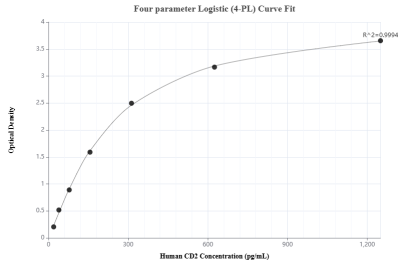
T: 4006900926

E: Proteintech-CN@ptglab.com

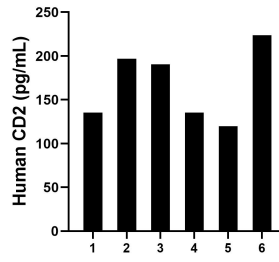
W: ptgcn.com

**This product is exclusively available under Proteintech Group brand and is not available to purchase from any other manufacturer.**

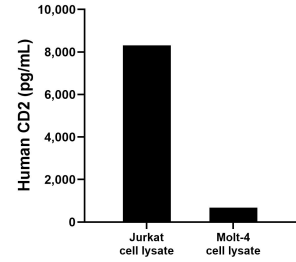
## Selected Validation Data



Sandwich ELISA standard curve of MP01045-4, Human CD2 Recombinant Matched Antibody Pair - PBS only. 84108-5-PBS was coated to a plate as the capture antibody and incubated with serial dilutions of standard Eg1271. 84108-3-PBS was HRP conjugated as the detection antibody. Range: 19.5-1250 pg/mL



Serum of six individual healthy human donors was measured. The human CD2 concentration of detected samples was determined to be 167.0 pg/mL with a range of 119.9 - 223.9 pg/mL



Jurkat and Molt-4 cell lysate were measured. The human CD2 concentration of detected samples was determined to be 8,318.1 pg/mL (based on a 1.0 mg/mL extract load) in Jurkat cell lysate and 679.3 pg/mL (based on a 4.5 mg/mL extract load) in Molt-4 cell lysate.