

For Research Use Only

Mouse IL-1 beta Recombinant Matched Antibody Pair, PBS Only



Catalog Number:MP01046-4

Capture Antibody Information

Catalog Number:
84136-1-PBS

Host:
Rabbit

Isotype:
IgG

Purification Method:
Protein A purification

Clone ID:
241364B3

Reactivity:
mouse

GenBank:
NM_008361.4

Conjugate:
Unconjugated

Full name:
interleukin 1 beta

Gene ID:
16176

Detection Antibody Information

Catalog Number:
84136-6-PBS

Host:
Rabbit

Isotype:
IgG

Purification Method:
Protein A purification

Clone ID:
241364H7

Reactivity:
mouse

GenBank:
NM_008361.4

Conjugate:
Unconjugated

Full name:
interleukin 1 beta

Gene ID:
16176

Applications

Tested Applications:
Sandwich ELISA

Range:
3.9-125 pg/mL (Sandwich ELISA)

Recommended Dilutions:
It is recommended that this reagent should be titrated in each testing system to obtain optimal results.

Product Information

MP01046-4 targets IL-1 beta in immunoassays as a matched antibody pair. Validated in Sandwich ELISA.

Capture antibody: Mouse IL-1 beta Recombinant antibody, PBS Only (Capture) 84136-1-PBS (241364B3). 100 µg. Concentration 1 mg/ml.

Detection antibody: Mouse IL-1 beta/IL-1F2 Recombinant antibody, PBS Only (Detector) 84136-6-PBS (241364H7). 100 µg. Concentration 1 mg/ml.

Alternative IL-1 beta matched antibody pairs: MP00331-1, MP00331-2, MP00331-3, MP00331-4, MP50134-1, MP80001-1, MP80001-2, MP80001-3, MP80001-4, MP80001-5, MP80001-6

Unconjugated rabbit recombinant monoclonal antibody pair in PBS only storage buffer at a concentration of 1 mg/mL, ready for conjugation. Created using Proteintech's proprietary in-house recombinant technology. Recombinant production enables unrivalled batch-to-batch consistency, easy scale-up, and future security of supply.

Matched antibody pairs are designed for use in a variety of assays and platforms that require matched antibody pairs.

Antibody use should be optimized for each application and assay.

Storage

Storage:
Store at -80°C.

The product is shipped with ice packs. Upon receipt, store it immediately at -80°C

Storage buffer:
PBS only

For technical support and original validation data for this product please contact:

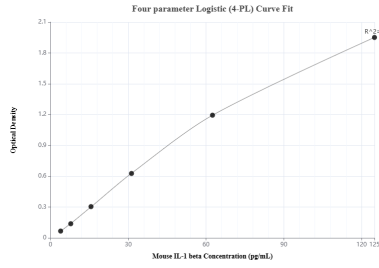
T: 4006900926

E: Proteintech-CN@ptgcn.com

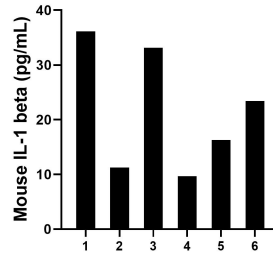
W: ptgcn.com

This product is exclusively available under Proteintech Group brand and is not available to purchase from any other manufacturer.

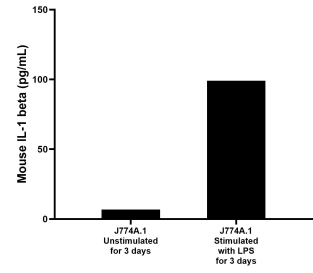
Selected Validation Data



Sandwich ELISA standard curve of MP01046-4, Mouse IL-1 beta Recombinant Matched Antibody Pair - PBS only. 84136-1-PBS was coated to a plate as the capture antibody and incubated with serial dilutions of standard Eg1577. 84136-6-PBS was HRP conjugated as the detection antibody. Range: 3.9-125 pg/mL



Serum of six mice was measured. The mouse IL-1 beta concentration of detected samples was determined to 21.7 pg/mL with a range of 9.7 - 36.2 ng/mL



J774A.1 cells were cultured unstimulated or stimulated with 1 μ g/mL LPS for 3 days. The mean IL-1 beta concentration was determined to be 6.8 pg/mL in unstimulated J774A.1 cell culture supernatant, 99.0 pg/mL in PHA stimulated J774A.1 cell culture supernatant.