

For Research Use Only

# FABP6 Recombinant Matched Antibody Pair, PBS Only



Catalog Number:MP01052-2

## Capture Antibody Information

**Catalog Number:**  
84132-1-PBS  
**Host:**  
Rabbit  
**Isotype:**  
IgG  
**Purification Method:**  
Protein A purification

**Clone ID:**  
241095A7  
**Reactivity:**  
human  
**GenBank:**  
BC022489  
**Immunogen Catalog Number:**  
Ag4788

**Conjugate:**  
Unconjugated  
**Full name:**  
fatty acid binding protein 6, ileal  
**Gene ID:**  
2172

## Detection Antibody Information

**Catalog Number:**  
84132-2-PBS  
**Host:**  
Rabbit  
**Isotype:**  
IgG  
**Purification Method:**  
Protein A purification

**Clone ID:**  
241095A11  
**Reactivity:**  
human  
**GenBank:**  
BC022489  
**Immunogen Catalog Number:**  
Ag4788

**Conjugate:**  
Unconjugated  
**Full name:**  
fatty acid binding protein 6, ileal  
**Gene ID:**  
2172

## Applications

**Tested Applications:**  
Sandwich ELISA

**Range:**  
0.625-20 ng/mL (Sandwich ELISA)

**Recommended Dilutions:**  
It is recommended that this reagent should be titrated in each testing system to obtain optimal results.

## Product Information

MP01052-2 targets FABP6 in immunoassays as a matched antibody pair. Validated in Sandwich ELISA.

Capture antibody: FABP6 Recombinant antibody, PBS Only (Capture/Detector) 84132-1-PBS (241095A7). 100  $\mu$ g. Concentration 1 mg/ml.

Detection antibody: FABP6 Recombinant antibody, PBS Only (Capture/Detector) 84132-2-PBS (241095A11). 100  $\mu$ g. Concentration 1 mg/ml.

Unconjugated rabbit recombinant monoclonal antibody pair in PBS only storage buffer at a concentration of 1 mg/mL, ready for conjugation. Created using Proteintech's proprietary in-house recombinant technology. Recombinant production enables unrivalled batch-to-batch consistency, easy scale-up, and future security of supply.

Matched antibody pairs are designed for use in a variety of assays and platforms that require matched antibody pairs.

Antibody use should be optimized for each application and assay.

## Storage

**Storage:**  
Store at -80°C.  
**The product is shipped with ice packs. Upon receipt, store it immediately at -80°C**  
**Storage buffer:**  
PBS only

For technical support and original validation data for this product please contact:

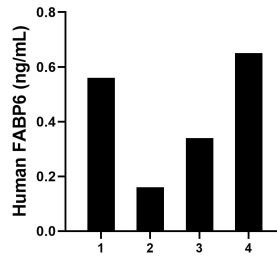
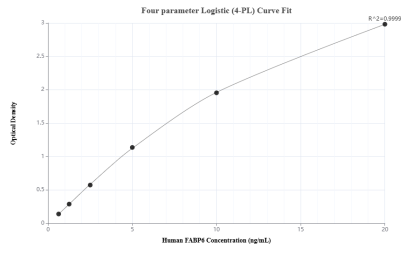
T: 4006900926

E: [Proteintech-CN@ptglab.com](mailto:Proteintech-CN@ptglab.com)

W: [ptgcn.com](http://ptgcn.com)

**This product is exclusively available under Proteintech Group brand and is not available to purchase from any other manufacturer.**

## Selected Validation Data



Sandwich ELISA standard curve of MP01052-2, Human FABP6 Recombinant Matched Antibody Pair - PBS only. 84132-1-PBS was coated to a plate as the capture antibody and incubated with serial dilutions of standard Ag4788. 84132-2-PBS was HRP conjugated as the detection antibody. Range: 0.625-20 ng/mL

Serum of four individual healthy human donors was measured. The human FABP6 concentration of detected samples was determined to be 0.43 ng/mL with a range of 0.16 - 0.65 ng/mL