

For Research Use Only

# BST2 Recombinant Matched Antibody Pair, PBS Only



Catalog Number:MP01064-4

## Capture Antibody Information

Catalog Number:  
84190-5-PBS

Host:  
Rabbit

Isotype:  
IgG

Purification Method:  
Protein A purification

Clone ID:  
241513F10

Reactivity:  
human

GenBank:  
BC033873

Conjugate:  
Unconjugated

Full name:  
bone marrow stromal cell antigen 2

Gene ID:  
684

## Detection Antibody Information

Catalog Number:  
84190-6-PBS

Host:  
Rabbit

Isotype:  
IgG

Purification Method:  
Protein A purification

Clone ID:  
241513G11

Reactivity:  
human

GenBank:  
BC033873

Conjugate:  
Unconjugated

Full name:  
bone marrow stromal cell antigen 2

Gene ID:  
684

## Applications

Tested Applications:  
Sandwich ELISA

Range:  
78.1-5000 pg/mL (Sandwich ELISA)

Recommended Dilutions:  
It is recommended that this reagent should be titrated in each testing system to obtain optimal results.

## Product Information

MP01064-4 targets BST2 in immunoassays as a matched antibody pair. Validated in Sandwich ELISA.

Capture antibody: BST2 Recombinant antibody, PBS Only (Capture/Detector) 84190-5-PBS (241513F10). 100  $\mu$ g. Concentration 1 mg/ml.

Detection antibody: BST2 Recombinant antibody, PBS Only (Detector) 84190-6-PBS (241513G11). 100  $\mu$ g. Concentration 1 mg/ml.

Alternative BST2 matched antibody pairs: MP01064-1, MP01064-2, MP01064-3, MP50437-1, MP50437-2

Unconjugated rabbit recombinant monoclonal antibody pair in PBS only storage buffer at a concentration of 1 mg/mL, ready for conjugation. Created using Proteintech's proprietary in-house recombinant technology. Recombinant production enables unrivalled batch-to-batch consistency, easy scale-up, and future security of supply.

Matched antibody pairs are designed for use in a variety of assays and platforms that require matched antibody pairs.

Antibody use should be optimized for each application and assay.

## Storage

Storage:

Store at -80°C.

**The product is shipped with ice packs. Upon receipt, store it immediately at -80°C**

Storage buffer:

PBS only

For technical support and original validation data for this product please contact:

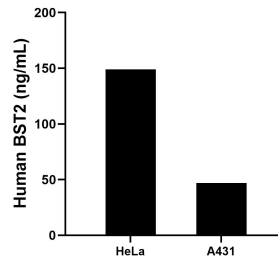
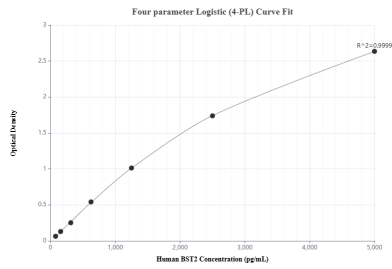
T: 4006900926

E: Proteintech-CN@ptglab.com

W: ptgcn.com

**This product is exclusively available under Proteintech Group brand and is not available to purchase from any other manufacturer.**

## Selected Validation Data



Sandwich ELISA standard curve of MP01064-4, Human BST2 Recombinant Matched Antibody Pair - PBS only. 84190-5-PBS was coated to a plate as the capture antibody and incubated with serial dilutions of standard Eg1961. 84190-6-PBS was HRP conjugated as the detection antibody. Range: 78.1-5000 pg/mL

The mean BST2 concentration was determined to be 149.00 ng/mL in HeLa cell extract based on a 1.5 mg/mL extract load and 46.91 ng/mL in A431 cell extract based on a 1.5 mg/mL extract load.