

For Research Use Only



# IL-13 Recombinant Matched Antibody Pair, PBS Only

Catalog Number:MP01078-3

## Capture Antibody Information

Catalog Number:

84158-5-PBS

Host:

Rabbit

Isotype:

IgG

Purification Method:

Protein A purification

Clone ID:

241396H6

Reactivity:

human

GenBank:

AAK53823

Conjugate:

Unconjugated

Full name:

interleukin 13

Gene ID:

3596

## Detection Antibody Information

Catalog Number:

84158-3-PBS

Host:

Rabbit

Isotype:

IgG

Purification Method:

Protein A purification

Clone ID:

241396E12

Reactivity:

human

GenBank:

AAK53823

Conjugate:

Unconjugated

Full name:

interleukin 13

Gene ID:

3596

## Applications

Tested Applications:

Sandwich ELISA

Range:

62.5-4000 pg/mL (Sandwich ELISA)

Recommended Dilutions:

It is recommended that this reagent should be titrated in each testing system to obtain optimal results.

## Product Information

MP01078-3 targets IL-13 in immunoassays as a matched antibody pair. Validated in Sandwich ELISA.

Capture antibody: IL13 Recombinant antibody, PBS Only (Capture) 84158-5-PBS (241396H6). 100  $\mu$ g. Concentration 1 mg/mL.

Detection antibody: IL-13 Recombinant antibody, PBS Only (Detector) 84158-3-PBS (241396E12). 100  $\mu$ g. Concentration 1 mg/mL.

Unconjugated rabbit recombinant monoclonal antibody pair in PBS only storage buffer at a concentration of 1 mg/mL, ready for conjugation. Created using Proteintech's proprietary in-house recombinant technology. Recombinant production enables unrivalled batch-to-batch consistency, easy scale-up, and future security of supply.

Matched antibody pairs are designed for use in a variety of assays and platforms that require matched antibody pairs.

Antibody use should be optimized for each application and assay.

## Storage

Storage:

Store at -80°C.

The product is shipped with ice packs. Upon receipt, store it immediately at -80°C

Storage buffer:

PBS only

For technical support and original validation data for this product please contact:

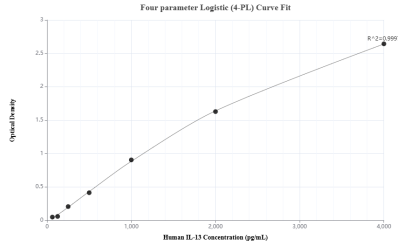
T: 4006900926

E: Proteintech-CN@ptglab.com

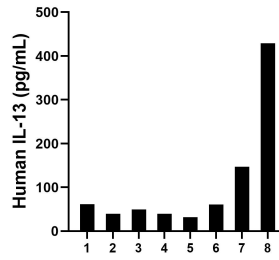
W: ptgcn.com

This product is exclusively available under Proteintech Group brand and is not available to purchase from any other manufacturer.

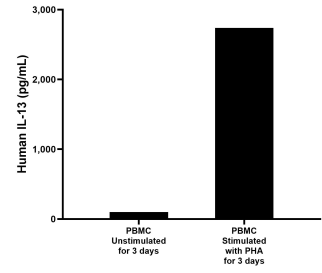
## Selected Validation Data



Sandwich ELISA standard curve of MP01078-3, Human IL-13 Recombinant Matched Antibody Pair - PBS only. 84158-5-PBS was coated to a plate as the capture antibody and incubated with serial dilutions of standard Eg0061. 84158-3-PBS was HRP conjugated as the detection antibody. Range: 62.5-4000 pg/mL



Serum of eight individual healthy human donors was measured. The human IL-13 concentration of detected samples was determined to be 50.3 pg/mL with a range of 31.9 - 429.1 pg/mL.



Human peripheral blood mononuclear cells (PBMC) were cultured unstimulated or stimulated with 10  $\mu$ g/mL PHA for 3 days. The mean IL-13 concentration was determined to be 101.1 pg/mL in unstimulated PBMC supernatant, 2,738.4 pg/mL in PHA stimulated PBMC supernatant.