

For Research Use Only

HER2/ErbB2 Recombinant Matched Antibody Pair, PBS Only



Catalog Number:MP01080-1

Capture Antibody Information

Catalog Number:
84182-2-PBS
Host:
Rabbit
Isotype:
IgG
Purification Method:
Protein A purification

Clone ID:
241409F9
Reactivity:
human
GenBank:
BC156755

Conjugate:
Unconjugated
Full name:
v-erb-b2 erythroblastic leukemia viral oncogene homolog 2, neuro/glioblastoma derived oncogene homolog (avian)
Gene ID:
2064

Detection Antibody Information

Catalog Number:
84182-3-PBS
Host:
Rabbit
Isotype:
IgG
Purification Method:
Protein A purification

Clone ID:
241409H4
Reactivity:
human
GenBank:
BC156755

Conjugate:
Unconjugated
Full name:
v-erb-b2 erythroblastic leukemia viral oncogene homolog 2, neuro/glioblastoma derived oncogene homolog (avian)
Gene ID:
2064

Applications

Tested Applications:
Cytometric bead array, Sandwich ELISA

Range:
0.625-80 ng/mL (Cytometric Bead Array)
19.5-1250 pg/mL (Sandwich ELISA)

Recommended Dilutions:
It is recommended that this reagent should be titrated in each testing system to obtain optimal results.

Product Information

MP01080-1 targets HER2/ErbB2 in immunoassays as a matched antibody pair. Validated in Cytometric bead array, Sandwich ELISA.

Capture antibody: HER2/ErbB2 Recombinant antibody, PBS Only (Capture) 84182-2-PBS (241409F9). 100 µg. Concentration 1 mg/ml.

Detection antibody: HER2/ErbB2 Recombinant antibody, PBS Only (Capture/Detector) 84182-3-PBS (241409H4). 100 µg. Concentration 1 mg/ml.

Alternative HER2/ErbB2 matched antibody pairs: MP01039-1, MP01039-2, MP01039-3, MP01039-4, MP01080-2, MP01080-3

Unconjugated rabbit recombinant monoclonal antibody pair in PBS only storage buffer at a concentration of 1 mg/mL, ready for conjugation. Created using Proteintech's proprietary in-house recombinant technology. Recombinant production enables unrivalled batch-to-batch consistency, easy scale-up, and future security of supply.

Matched antibody pairs are designed for use in a variety of assays and platforms that require matched antibody pairs.

Antibody use should be optimized for each application and assay.

Storage

Storage:
Store at -80°C.
The product is shipped with ice packs. Upon receipt, store it immediately at -80°C
Storage buffer:
PBS only

For technical support and original validation data for this product please contact:

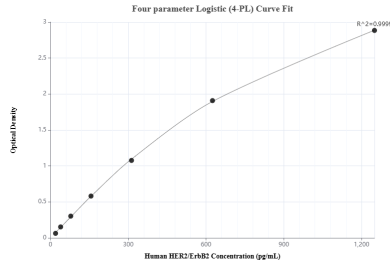
T: 4006900926

E: Proteintech-CN@ptglab.com

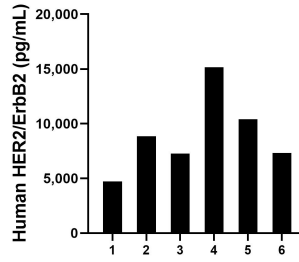
W: ptgcn.com

This product is exclusively available under Proteintech Group brand and is not available to purchase from any other manufacturer.

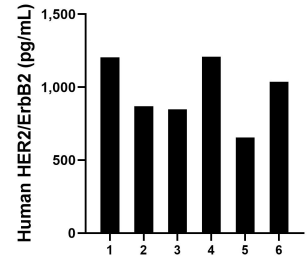
Selected Validation Data



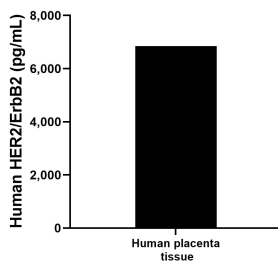
Sandwich ELISA standard curve of MP01080-1, Human HER2/ErbB2 Recombinant Matched Antibody Pair - PBS only. 84182-2-PBS was coated to a plate as the capture antibody and incubated with serial dilutions of standard RPO2350. 84182-3-PBS was HRP conjugated as the detection antibody. Range: 19.5-1250 pg/mL



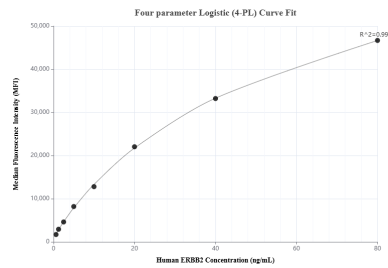
Serum of six individual healthy human donors was measured. The human HER2/ErbB2 concentration of detected samples was determined to be 8,952.9 pg/mL with a range of 4,726.1 - 15,157.7 pg/mL



Human milk of six individual healthy human donors was measured. The human HER2/ErbB2 concentration of detected samples was determined to be 969.9 pg/mL with a range of 654.3 - 1,208.0 pg/mL



The mean HER2/ErbB2 concentration was determined to be 6,844.8 pg/mL in human placenta tissue extract based on a 2.9 mg/mL extract load.



Cytometric bead array standard curve of MP01080-1, HER2/ERBB2 Recombinant Matched Antibody Pair, PBS Only. Capture antibody: 84182-2-PBS. Detection antibody: 84182-3-PBS. Standard: RPO2350. Range: 0.625-80 ng/mL