

LIMP2 Recombinant Matched Antibody Pair, PBS Only

Catalog Number: MP01086-3

Capture Antibody Information

Catalog Number:
84193-1-PBS
Host:
Rabbit
Isotype:
IgG
Purification Method:
Protein A purification

Clone ID:
241468D8
Reactivity:
human
GenBank:
BC021892
Immunogen Catalog Number:
Ag25908

Conjugate:
Unconjugated
Full name:
scavenger receptor class B, member 2
Gene ID:
950

Detection Antibody Information

Catalog Number:
84193-3-PBS
Host:
Rabbit
Isotype:
IgG
Purification Method:
Protein A purification

Clone ID:
241468G1
Reactivity:
human
GenBank:
BC021892
Immunogen Catalog Number:
Ag25908

Conjugate:
Unconjugated
Full name:
scavenger receptor class B, member 2
Gene ID:
950

Applications

Tested Applications:
Cytometric bead array

Range:
0.781-100 ng/mL (Cytometric Bead Array)

Recommended Dilutions:
It is recommended that this reagent should be titrated in each testing system to obtain optimal results.

Product Information

MP01086-3 targets LIMP2 in immunoassays as a matched antibody pair. Validated in Cytometric bead array.

Capture antibody: LIMP2 Recombinant antibody, PBS Only (Capture) 84193-1-PBS (241468D8). 100 µg. Concentration 1 mg/mL.

Detection antibody: LIMP2 Recombinant antibody, PBS Only (Detector) 84193-3-PBS (241468G1). 100 µg. Concentration 1 mg/mL.

Alternative LIMP2 matched antibody pairs: MP01086-1, MP01086-2

Unconjugated rabbit recombinant monoclonal antibody pair in PBS only storage buffer at a concentration of 1 mg/mL, ready for conjugation. Created using Proteintech's proprietary in-house recombinant technology. Recombinant production enables unrivalled batch-to-batch consistency, easy scale-up, and future security of supply.

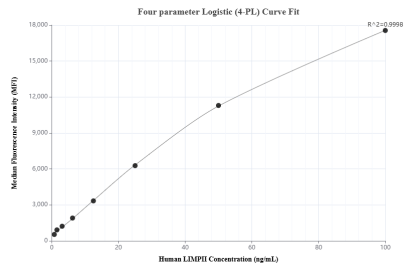
Matched antibody pairs are designed for use in a variety of assays and platforms that require matched antibody pairs.

Antibody use should be optimized for each application and assay.

Storage

Storage:
Store at -80°C.
The product is shipped with ice packs. Upon receipt, store it immediately at -80°C
Storage buffer:
PBS only

Selected Validation Data



Cytometric bead array standard curve of MP01086-3, LIMP2 Recombinant Matched Antibody Pair, PBS Only. Capture antibody: 84193-1-PBS. Detection antibody: 84193-3-PBS. Standard: Ag25908. Range: 0.781-100 ng/mL.