

For Research Use Only

CD48 Recombinant Matched Antibody Pair, PBS Only



Catalog Number:MP01093-2

Capture Antibody Information

Catalog Number:
84186-4-PBS

Host:
Rabbit

Isotype:
IgG

Purification Method:
Protein A purification

Clone ID:
241389F8

Reactivity:
human

GenBank:
BC016182

Conjugate:
Unconjugated

Full name:
CD48 molecule

Gene ID:
962

Detection Antibody Information

Catalog Number:
84186-3-PBS

Host:
Rabbit

Isotype:
IgG

Purification Method:
Protein A purification

Clone ID:
241389E5

Reactivity:
human

GenBank:
BC016182

Conjugate:
Unconjugated

Full name:
CD48 molecule

Gene ID:
962

Applications

Tested Applications:
Cytometric bead array, Sandwich ELISA

Range:
0.313-40 ng/mL (Cytometric Bead Array)
39.1-2500 pg/mL (Sandwich ELISA)

Recommended Dilutions:
It is recommended that this reagent should be titrated in each testing system to obtain optimal results.

Product Information

MP01093-2 targets CD48 in immunoassays as a matched antibody pair. Validated in Cytometric bead array, Sandwich ELISA.

Capture antibody: CD48 Recombinant antibody, PBS Only (Capture) 84186-4-PBS (241389F8). 100 µg. Concentration 1 mg/ml.

Detection antibody: CD48 Recombinant antibody, PBS Only (Detector) 84186-3-PBS (241389E5). 100 µg. Concentration 1 mg/ml.

Alternative CD48 matched antibody pairs: MP01093-1, MP01093-3

Unconjugated rabbit recombinant monoclonal antibody pair in PBS only storage buffer at a concentration of 1 mg/mL, ready for conjugation. Created using Proteintech's proprietary in-house recombinant technology. Recombinant production enables unrivalled batch-to-batch consistency, easy scale-up, and future security of supply.

Matched antibody pairs are designed for use in a variety of assays and platforms that require matched antibody pairs.

Antibody use should be optimized for each application and assay.

Storage

Storage:
Store at -80°C.

The product is shipped with ice packs. Upon receipt, store it immediately at -80°C

Storage buffer:
PBS only

For technical support and original validation data for this product please contact:

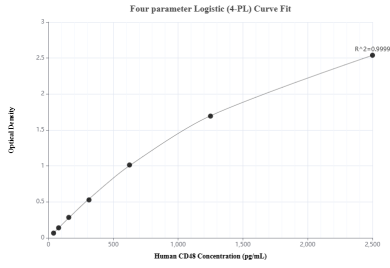
T: 4006900926

E: Proteintech-CN@ptglab.com

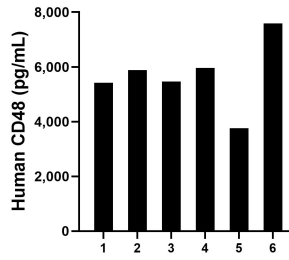
W: ptgcn.com

This product is exclusively available under Proteintech Group brand and is not available to purchase from any other manufacturer.

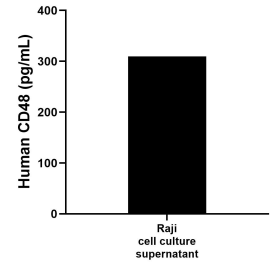
Selected Validation Data



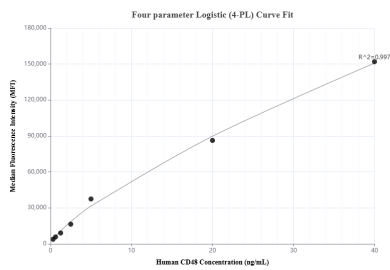
Sandwich ELISA standard curve of MP01093-2, Human CD48 Recombinant Matched Antibody Pair - PBS only. 84186-4-PBS was coated to a plate as the capture antibody and incubated with serial dilutions of standard Eg1005. 84186-3-PBS was HRP conjugated as the detection antibody. Range: 39.1-2500 pg/mL



Serum of six individual healthy human donors was measured. The human CD48 concentration of detected samples was determined to be 5,680.6 pg/mL with a range of 3,761.2 - 7,588.7 pg/mL.



Raji cells (5×10^6 cells/mL) were cultured in RPMI supplemented with 10% fetal bovine serum, 2 mM L-glutamine, 100 U/mL penicillin, and 100 μ g/mL streptomycin sulfate. An aliquot of the cell culture supernate was removed, assayed for human CD48, and measured 309.5 pg/mL



Cytometric bead array standard curve of MP01093-2, CD48 Recombinant Matched Antibody Pair, PBS Only. Capture antibody: 84186-4-PBS. Detection antibody: 84186-3-PBS. Standard: Eg1005. Range: 0.313-40 ng/mL