

SLC7A5 Recombinant Matched Antibody Pair, PBS Only

Catalog Number:MP01094-1

Capture Antibody Information

Catalog Number:
84178-1-PBS
Host:
Rabbit
Isotype:
IgG
Purification Method:
Protein A purification

Clone ID:
241476A1
Reactivity:
human
GenBank:
BC039692
Immunogen Catalog Number:
Ag29164

Conjugate:
Unconjugated
Full name:
solute carrier family 7 (cationic amino acid transporter, y+ system), member 5
Gene ID:
8140

Detection Antibody Information

Catalog Number:
84178-3-PBS
Host:
Rabbit
Isotype:
IgG
Purification Method:
Protein A purification

Clone ID:
241476F2
Reactivity:
human
GenBank:
BC039692
Immunogen Catalog Number:
Ag29164

Conjugate:
Unconjugated
Full name:
solute carrier family 7 (cationic amino acid transporter, y+ system), member 5
Gene ID:
8140

Applications

Tested Applications:
Cytometric bead array

Range:
0.625-80 ng/mL (Cytometric Bead Array)

Recommended Dilutions:
It is recommended that this reagent should be titrated in each testing system to obtain optimal results.

Product Information

MP01094-1 targets SLC7A5 in immunoassays as a matched antibody pair. Validated in Cytometric bead array.

Capture antibody: SLC7A5 Recombinant antibody, PBS Only (Capture) 84178-1-PBS (241476A1). 100 µg. Concentration 1 mg/ml.

Detection antibody: SLC7A5 Recombinant antibody, PBS Only (Capture/Detector) 84178-3-PBS (241476F2). 100 µg. Concentration 1 mg/ml.

Alternative SLC7A5 matched antibody pairs: MP01094-2, MP01094-3

Unconjugated rabbit recombinant monoclonal antibody pair in PBS only storage buffer at a concentration of 1 mg/mL, ready for conjugation. Created using Proteintech's proprietary in-house recombinant technology. Recombinant production enables unrivalled batch-to-batch consistency, easy scale-up, and future security of supply.

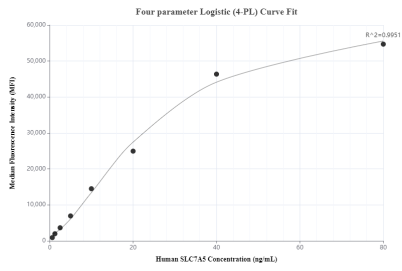
Matched antibody pairs are designed for use in a variety of assays and platforms that require matched antibody pairs.

Antibody use should be optimized for each application and assay.

Storage

Storage:
Store at -80°C.
The product is shipped with ice packs. Upon receipt, store it immediately at -80°C
Storage buffer:
PBS only

Selected Validation Data



Cytometric bead array standard curve of MP01094-1, SLC7A5 Recombinant Matched Antibody Pair, PBS Only. Capture antibody: 84178-1-PBS. Detection antibody: 84178-3-PBS. Standard: Ag29164. Range: 0.625-80 ng/mL