

# SLC7A5 Recombinant Matched Antibody Pair, PBS Only

Catalog Number: MP01094-2

## Capture Antibody Information

**Catalog Number:**  
84178-1-PBS  
**Host:**  
Rabbit  
**Isotype:**  
IgG  
**Purification Method:**  
Protein A purification

**Clone ID:**  
241476A1  
**Reactivity:**  
human  
**GenBank:**  
BC039692  
**Immunogen Catalog Number:**  
Ag29164

**Conjugate:**  
Unconjugated  
**Full name:**  
solute carrier family 7 (cationic amino acid transporter, y+ system), member 5  
**Gene ID:**  
8140

## Detection Antibody Information

**Catalog Number:**  
84178-4-PBS  
**Host:**  
Rabbit  
**Isotype:**  
IgG  
**Purification Method:**  
Protein A purification

**Clone ID:**  
241476G4  
**Reactivity:**  
human  
**GenBank:**  
BC039692  
**Immunogen Catalog Number:**  
Ag29164

**Conjugate:**  
Unconjugated  
**Full name:**  
solute carrier family 7 (cationic amino acid transporter, y+ system), member 5  
**Gene ID:**  
8140

## Applications

**Tested Applications:**  
Cytometric bead array, Sandwich ELISA

**Range:**  
0.625-80 ng/mL (Cytometric Bead Array)  
78.1-5000 pg/mL (Sandwich ELISA)

**Recommended Dilutions:**  
It is recommended that this reagent should be titrated in each testing system to obtain optimal results.

## Product Information

MP01094-2 targets SLC7A5 in immunoassays as a matched antibody pair. Validated in Cytometric bead array, Sandwich ELISA.

Capture antibody: SLC7A5 Recombinant antibody, PBS Only (Capture) 84178-1-PBS (241476A1). 100 µg. Concentration 1 mg/ml.

Detection antibody: SLC7A5 Recombinant antibody, PBS Only (Detector) 84178-4-PBS (241476G4). 100 µg. Concentration 1 mg/ml.

Alternative SLC7A5 matched antibody pairs: MP01094-1, MP01094-3

Unconjugated rabbit recombinant monoclonal antibody pair in PBS only storage buffer at a concentration of 1 mg/mL, ready for conjugation. Created using Proteintech's proprietary in-house recombinant technology. Recombinant production enables unrivalled batch-to-batch consistency, easy scale-up, and future security of supply.

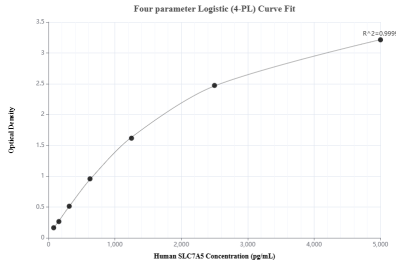
Matched antibody pairs are designed for use in a variety of assays and platforms that require matched antibody pairs.

Antibody use should be optimized for each application and assay.

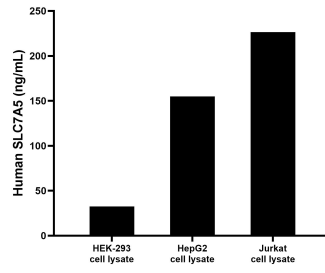
## Storage

**Storage:**  
Store at -80°C.  
**The product is shipped with ice packs. Upon receipt, store it immediately at -80°C**  
**Storage buffer:**  
PBS only

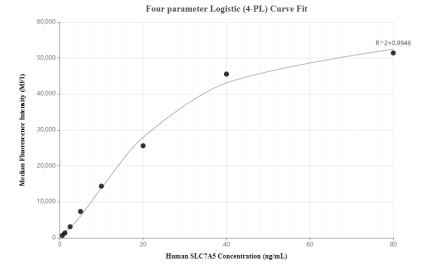
## Selected Validation Data



Sandwich ELISA standard curve of MP01094-2, Human SLC7A5 Recombinant Matched Antibody Pair - PBS only. 84178-1-PBS was coated to a plate as the capture antibody and incubated with serial dilutions of standard Ag29164. 84178-4-PBS was HRP conjugated as the detection antibody. Range: 78.1-5000 pg/mL



HEK-293, HepG2 and Jurkat cell lysates were measured. The human SLC7A5 concentration of detected samples was determined to be 32.56 ng/mL (based on a 2.0 mg/mL extract load) in HEK-293 cell lysate, 154.94 ng/mL (based on a 2.0 mg/mL extract load) in HepG2 cell lysate and 226.39 ng/mL (based on a 2.3 mg/mL extract load) in Jurkat cell lysate.



Cytometric bead array standard curve of MP01094-2, SLC7A5 Recombinant Matched Antibody Pair, PBS Only. Capture antibody: 84178-1-PBS. Detection antibody: 84178-4-PBS. Standard: Ag29164. Range: 0.625-80 ng/mL