

For Research Use Only

CHRNA4 Recombinant Matched Antibody Pair, PBS Only



Catalog Number:MP01101-4

Capture Antibody Information

Catalog Number:
84168-1-PBS

Host:
Rabbit

Isotype:
IgG

Purification Method:
Protein A purification

Clone ID:
241492A6

Reactivity:
human

GenBank:
BC096290

Immunogen Catalog Number:
Ag16584

Conjugate:
Unconjugated

Full name:
cholinergic receptor, nicotinic, alpha 4

Gene ID:
1137

Detection Antibody Information

Catalog Number:
84168-3-PBS

Host:
Rabbit

Isotype:
IgG

Purification Method:
Protein A purification

Clone ID:
241492E2

Reactivity:
human

GenBank:
BC096290

Immunogen Catalog Number:
Ag16584

Conjugate:
Unconjugated

Full name:
cholinergic receptor, nicotinic, alpha 4

Gene ID:
1137

Applications

Tested Applications:
Sandwich ELISA

Range:
39.1-2500 pg/mL (Sandwich ELISA)

Recommended Dilutions:
It is recommended that this reagent should be titrated in each testing system to obtain optimal results.

Product Information

MP01101-4 targets CHRNA4 in immunoassays as a matched antibody pair. Validated in Sandwich ELISA.

Capture antibody: CHRNA4 Recombinant antibody, PBS Only (Capture/Detector) 84168-1-PBS (241492A6). 100 μ g. Concentration 1 mg/ml.

Detection antibody: CHRNA4 Recombinant antibody, PBS Only (Capture/Detector) 84168-3-PBS (241492E2). 100 μ g. Concentration 1 mg/ml.

Alternative CHRNA4 matched antibody pairs: MP01101-1, MP01101-2, MP01101-3

Unconjugated rabbit recombinant monoclonal antibody pair in PBS only storage buffer at a concentration of 1 mg/mL, ready for conjugation. Created using Proteintech's proprietary in-house recombinant technology. Recombinant production enables unrivalled batch-to-batch consistency, easy scale-up, and future security of supply.

Matched antibody pairs are designed for use in a variety of assays and platforms that require matched antibody pairs.

Antibody use should be optimized for each application and assay.

Storage

Storage:

Store at -80°C.

The product is shipped with ice packs. Upon receipt, store it immediately at -80°C

Storage buffer:

PBS only

For technical support and original validation data for this product please contact:

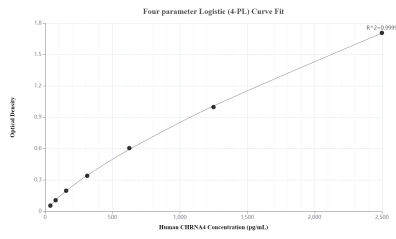
T: 4006900926

E: Proteintech-CN@ptglab.com

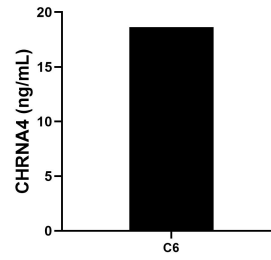
W: ptgcn.com

This product is exclusively available under Proteintech Group brand and is not available to purchase from any other manufacturer.

Selected Validation Data



Sandwich ELISA standard curve of MP01101-4, Human CHRNA4 Recombinant Matched Antibody Pair - PBS only. 84168-1-PBS was coated to a plate as the capture antibody and incubated with serial dilutions of standard Ag16584. 84168-3-PBS was HRP conjugated as the detection antibody. Range: 39.1-2500 pg/mL.



The mean CHRNA4 concentration was determined to be 18.6 ng/mL in C6 cell extract based on a 4.9 mg/mL extract load.