

For Research Use Only

# ZC3H13 Recombinant Matched Antibody Pair, PBS Only



Catalog Number:MP01121-3

## Capture Antibody Information

**Catalog Number:**  
84228-1-PBS  
**Host:**  
Rabbit  
**Isotype:**  
IgG  
**Purification Method:**  
Protein A purification

**Clone ID:**  
241516A6  
**Reactivity:**  
human  
**GenBank:**  
NM\_001076788  
**Immunogen Catalog Number:**  
Ag28909

**Conjugate:**  
Unconjugated  
**Full name:**  
zinc finger CCCH-type containing 13  
**Gene ID:**  
23091

## Detection Antibody Information

**Catalog Number:**  
84228-2-PBS  
**Host:**  
Rabbit  
**Isotype:**  
IgG  
**Purification Method:**  
Protein A purification

**Clone ID:**  
241516C5  
**Reactivity:**  
human  
**GenBank:**  
NM\_001076788  
**Immunogen Catalog Number:**  
Ag28909

**Conjugate:**  
Unconjugated  
**Full name:**  
zinc finger CCCH-type containing 13  
**Gene ID:**  
23091

## Applications

**Tested Applications:**  
Sandwich ELISA

**Range:**  
78.1-2500 pg/mL (Sandwich ELISA)

**Recommended Dilutions:**  
It is recommended that this reagent should be titrated in each testing system to obtain optimal results.

## Product Information

MP01121-3 targets ZC3H13 in immunoassays as a matched antibody pair. Validated in Sandwich ELISA.

Capture antibody: ZC3H13 Recombinant antibody, PBS Only (Capture/Detector) 84228-1-PBS (241516A6). 100 µg. Concentration 1 mg/ml.

Detection antibody: ZC3H13 Recombinant antibody, PBS Only (Detector) 84228-2-PBS (241516C5). 100 µg. Concentration 1 mg/ml.

Alternative ZC3H13 matched antibody pairs: MP01121-1, MP01121-2

Unconjugated rabbit recombinant monoclonal antibody pair in PBS only storage buffer at a concentration of 1 mg/mL, ready for conjugation. Created using Proteintech's proprietary in-house recombinant technology. Recombinant production enables unrivalled batch-to-batch consistency, easy scale-up, and future security of supply.

Matched antibody pairs are designed for use in a variety of assays and platforms that require matched antibody pairs.

Antibody use should be optimized for each application and assay.

## Storage

**Storage:**  
Store at -80°C.  
**The product is shipped with ice packs. Upon receipt, store it immediately at -80°C**  
**Storage buffer:**  
PBS only

For technical support and original validation data for this product please contact:

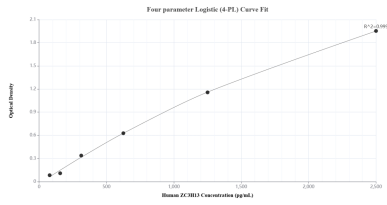
T: 4006900926

E: [Proteintech-CN@ptglab.com](mailto:Proteintech-CN@ptglab.com)

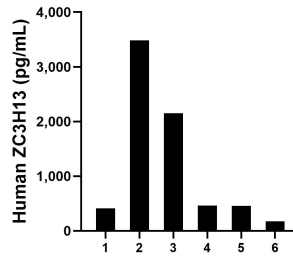
W: [ptgcn.com](http://ptgcn.com)

**This product is exclusively available under Proteintech Group brand and is not available to purchase from any other manufacturer.**

## Selected Validation Data



Sandwich ELISA standard curve of MP01121-3, Human ZC3H13 Recombinant Matched Antibody Pair - PBS only. 84228-1-PBS was coated to a plate as the capture antibody and incubated with serial dilutions of standard Ag28909. 84228-2-PBS was HRP conjugated as the detection antibody. Range: 78.1-2500 pg/mL.



Serum of six individual healthy human donors was measured. The ZC3H13 concentration of detected samples was determined to be 1,191.0 pg/mL with a range of 175.7-3,486.0 pg/mL.