

# CD122/IL-2RB Recombinant Matched Antibody Pair, PBS Only

Catalog Number: MP01123-3

## Capture Antibody Information

<b>Catalog Number:</b> 84229-4-PBS	<b>Clone ID:</b> 241408G10	<b>Conjugate:</b> Unconjugated
<b>Host:</b> Rabbit	<b>Reactivity:</b> human	<b>Full name:</b> interleukin 2 receptor, beta
<b>Isotype:</b> IgG	<b>GenBank:</b> BC025691	<b>Gene ID:</b> 3560
<b>Purification Method:</b> Protein A purification	<b>Immunogen Catalog Number:</b> Ag3929	

## Detection Antibody Information

<b>Catalog Number:</b> 84229-1-PBS	<b>Clone ID:</b> 241408A9	<b>Conjugate:</b> Unconjugated
<b>Host:</b> Rabbit	<b>Reactivity:</b> human	<b>Full name:</b> interleukin 2 receptor, beta
<b>Isotype:</b> IgG	<b>GenBank:</b> BC025691	<b>Gene ID:</b> 3560
<b>Purification Method:</b> Protein A purification	<b>Immunogen Catalog Number:</b> Ag3929	

## Applications

<b>Tested Applications:</b> Sandwich ELISA	<b>Range:</b> 39.1-2500 pg/mL (Sandwich ELISA)	<b>Recommended Dilutions:</b> It is recommended that this reagent should be titrated in each testing system to obtain optimal results.
-----------------------------------------------	---------------------------------------------------	-------------------------------------------------------------------------------------------------------------------------------------------

## Product Information

MP01123-3 targets CD122/IL-2RB in immunoassays as a matched antibody pair. Validated in Sandwich ELISA.

Capture antibody: IL2RB Recombinant antibody, PBS Only (Capture) 84229-4-PBS (241408G10). 100 µg. Concentration 1 mg/ml.

Detection antibody: CD122/IL-2RB Recombinant antibody, PBS Only (Detector) 84229-1-PBS (241408A9). 100 µg. Concentration 1 mg/ml.

Alternative CD122/IL-2RB matched antibody pairs: MP01123-1, MP01123-2, MP50451-1, MP50451-2, MP50451-3

Unconjugated rabbit recombinant monoclonal antibody pair in PBS only storage buffer at a concentration of 1 mg/mL, ready for conjugation. Created using Proteintech's proprietary in-house recombinant technology. Recombinant production enables unrivalled batch-to-batch consistency, easy scale-up, and future security of supply.

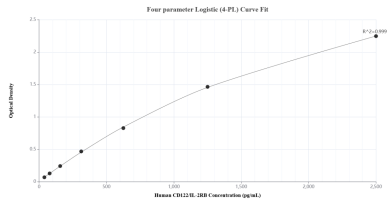
Matched antibody pairs are designed for use in a variety of assays and platforms that require matched antibody pairs.

Antibody use should be optimized for each application and assay.

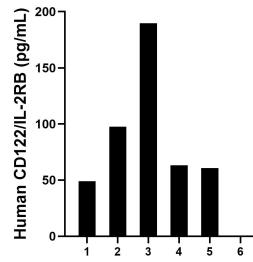
## Storage

**Storage:**  
Store at -80°C.  
**The product is shipped with ice packs. Upon receipt, store it immediately at -80°C**  
**Storage buffer:**  
PBS only

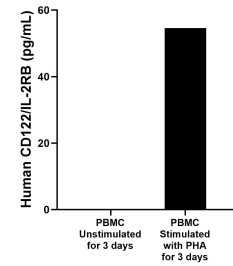
## Selected Validation Data



Sandwich ELISA standard curve of MP01123-3, Human CD122/IL-2RB Recombinant Matched Antibody Pair - PBS only. 84229-4-PBS was coated to a plate as the capture antibody and incubated with serial dilutions of standard Ag3929. 84229-1-PBS was HRP conjugated as the detection antibody. Range: 39.1-2500 pg/mL



Serum of six individual healthy human donors was measured. The CD122/IL-2RB concentration of detected samples was determined to be 92.1 pg/mL with a range of 49.0-189.6 pg/mL.



Human peripheral blood mononuclear cells (PBMC) were cultured unstimulated or stimulated with 10  $\mu$ g/mL PHA for 3 days. The mean CD122/IL-2RB concentration was not determined in unstimulated PBMC supernatant, 54.6 pg/mL in PHA stimulated PBMC supernatant.