

For Research Use Only

Mouse CD23 Recombinant Matched Antibody Pair, PBS Only



Catalog Number:MP01134-2

Capture Antibody Information

Catalog Number:
84212-4-PBS
Host:
Rabbit
Isotype:
IgG
Purification Method:
Protein A purification

Clone ID:
241385A5
Reactivity:
mouse
GenBank:
EDL21948.1

Conjugate:
Unconjugated
Full name:
Fc receptor, IgE, low affinity II, alpha polypeptide
Gene ID:
14128

Detection Antibody Information

Catalog Number:
84212-3-PBS
Host:
Rabbit
Isotype:
IgG
Purification Method:
Protein A purification

Clone ID:
241385C9
Reactivity:
mouse
GenBank:
EDL21948.1

Conjugate:
Unconjugated
Full name:
Fc receptor, IgE, low affinity II, alpha polypeptide
Gene ID:
14128

Applications

Tested Applications:
Sandwich ELISA

Range:
0.313-20 ng/mL (Sandwich ELISA)

Recommended Dilutions:
It is recommended that this reagent should be titrated in each testing system to obtain optimal results.

Product Information

MP01134-2 targets CD23 in immunoassays as a matched antibody pair. Validated in Sandwich ELISA.

Capture antibody: Mouse CD23/Fc epsilon RII Recombinant antibody, PBS Only (Capture) 84212-4-PBS (241385A5). 100 µg. Concentration 1 mg/ml.

Detection antibody: Mouse CD23/Fc epsilon RII Recombinant antibody, PBS Only (Detector) 84212-3-PBS (241385C9). 100 µg. Concentration 1 mg/ml.

Alternative CD23 matched antibody pairs: MP00958-1, MP00958-2, MP00958-3

Unconjugated rabbit recombinant monoclonal antibody pair in PBS only storage buffer at a concentration of 1 mg/mL, ready for conjugation. Created using Proteintech's proprietary in-house recombinant technology. Recombinant production enables unrivalled batch-to-batch consistency, easy scale-up, and future security of supply.

Matched antibody pairs are designed for use in a variety of assays and platforms that require matched antibody pairs.

Antibody use should be optimized for each application and assay.

Storage

Storage:
Store at -80°C.
The product is shipped with ice packs. Upon receipt, store it immediately at -80°C
Storage buffer:
PBS only

For technical support and original validation data for this product please contact:

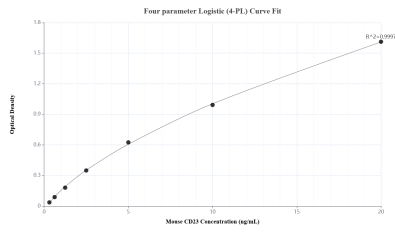
T: 4006900926

E: Proteintech-CN@ptglab.com

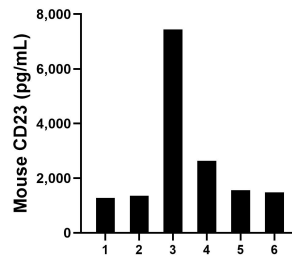
W: ptgcn.com

This product is exclusively available under Proteintech Group brand and is not available to purchase from any other manufacturer.

Selected Validation Data



Sandwich ELISA standard curve of MP01134-2, Mouse CD23 Recombinant Matched Antibody Pair - PBS only. 84212-4-PBS was coated to a plate as the capture antibody and incubated with serial dilutions of standard Eg1295. 84212-3-PBS was HRP conjugated as the detection antibody. Range: 0.313-20 ng/mL.



Serum of six mouse was measured. The CD23 concentration of detected samples was determined to be 2624.00 pg/mL with a range of 1279.00 - 7445.00 pg/mL.