

For Research Use Only

# P16-INK4A Recombinant Matched Antibody Pair, PBS Only



Catalog Number:MP01135-4

## Capture Antibody Information

**Catalog Number:**  
81373-6-PBS  
**Host:**  
Rabbit  
**Isotype:**  
IgG  
**Purification Method:**  
Protein A purification

**Clone ID:**  
241438G3  
**Reactivity:**  
human  
**GenBank:**  
BC021998  
**Immunogen Catalog Number:**  
Ag1328

**Conjugate:**  
Unconjugated  
**Full name:**  
cyclin-dependent kinase inhibitor 2A (melanoma, p16, inhibits CDK4)  
**Gene ID:**  
1029

## Detection Antibody Information

**Catalog Number:**  
81373-4-PBS  
**Host:**  
Rabbit  
**Isotype:**  
IgG  
**Purification Method:**  
Protein A purification

**Clone ID:**  
241438D6  
**Reactivity:**  
human  
**GenBank:**  
BC021998  
**Immunogen Catalog Number:**  
Ag1328

**Conjugate:**  
Unconjugated  
**Full name:**  
cyclin-dependent kinase inhibitor 2A (melanoma, p16, inhibits CDK4)  
**Gene ID:**  
1029

## Applications

**Tested Applications:**  
Sandwich ELISA

**Range:**  
0.195-12.5 ng/mL (Sandwich ELISA)

**Recommended Dilutions:**  
It is recommended that this reagent should be titrated in each testing system to obtain optimal results.

## Product Information

MP01135-4 targets P16-INK4A in immunoassays as a matched antibody pair. Validated in Sandwich ELISA.

Capture antibody: P16-INK4A Recombinant antibody, PBS Only (Capture) 81373-6-PBS (241438G3). 100 µg. Concentration 1 mg/ml.

Detection antibody: P16-INK4A Recombinant antibody, PBS Only (Detector) 81373-4-PBS (241438D6). 100 µg. Concentration 1 mg/ml.

Alternative P16-INK4A matched antibody pairs: MP01135-1, MP01135-2, MP01135-3

Unconjugated rabbit recombinant monoclonal antibody pair in PBS only storage buffer at a concentration of 1 mg/mL, ready for conjugation. Created using Proteintech's proprietary in-house recombinant technology. Recombinant production enables unrivalled batch-to-batch consistency, easy scale-up, and future security of supply.

Matched antibody pairs are designed for use in a variety of assays and platforms that require matched antibody pairs.

Antibody use should be optimized for each application and assay.

## Storage

**Storage:**  
Store at -80°C.  
**The product is shipped with ice packs. Upon receipt, store it immediately at -80°C**  
**Storage buffer:**  
PBS only

For technical support and original validation data for this product please contact:

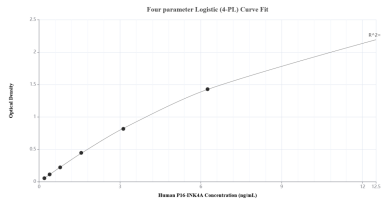
T: 4006900926

E: [Proteintech-CN@ptglab.com](mailto:Proteintech-CN@ptglab.com)

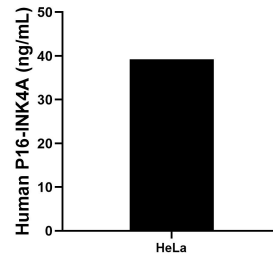
W: [ptgcn.com](http://ptgcn.com)

**This product is exclusively available under Proteintech Group brand and is not available to purchase from any other manufacturer.**

## Selected Validation Data



Sandwich ELISA standard curve of MP01135-4, Human P16-INK4A Recombinant Matched Antibody Pair - PBS only. 81373-6-PBS was coated to a plate as the capture antibody and incubated with serial dilutions of standard Ag1328. 81373-4-PBS was HRP conjugated as the detection antibody. Range: 0.195-12.5 ng/mL



The mean P16-INK4A concentration was determined to be 39.21 ng/mL in HeLa cell extract based on a 2.80 mg/mL extract load.