

CD30/TNFRSF8 Recombinant Matched Antibody Pair, PBS Only

Catalog Number:MP01137-1

Capture Antibody Information

Catalog Number:
84241-2-PBS
Host:
Rabbit
Isotype:
IgG
Purification Method:
Protein A purification

Clone ID:
241330G11
Reactivity:
human
GenBank:
NM_001243

Conjugate:
Unconjugated
Full name:
tumor necrosis factor receptor superfamily, member 8
Gene ID:
943

Detection Antibody Information

Catalog Number:
84241-4-PBS
Host:
Rabbit
Isotype:
IgG
Purification Method:
Protein A purification

Clone ID:
241331E12
Reactivity:
human
GenBank:
NM_001243

Conjugate:
Unconjugated
Full name:
tumor necrosis factor receptor superfamily, member 8
Gene ID:
943

Applications

Tested Applications:
Cytometric bead array, Sandwich ELISA

Range:
0.313-40 ng/mL (Cytometric Bead Array)
39.1-1250 pg/mL (Sandwich ELISA)

Recommended Dilutions:
It is recommended that this reagent should be titrated in each testing system to obtain optimal results.

Product Information

MP01137-1 targets CD30/TNFRSF8 in immunoassays as a matched antibody pair. Validated in Cytometric bead array, Sandwich ELISA.

Capture antibody: CD30/TNFRSF8 Recombinant antibody, PBS Only (Capture) 84241-2-PBS (241330G11). 100 µg. Concentration 1 mg/ml.

Detection antibody: CD30/TNFRSF8 Recombinant antibody, PBS Only (Detector) 84241-4-PBS (241331E12). 100 µg. Concentration 1 mg/ml.

Alternative CD30/TNFRSF8 matched antibody pairs: MP01137-2, MP01137-3, MP01307-1, MP01307-2, MP01307-3

Unconjugated rabbit recombinant monoclonal antibody pair in PBS only storage buffer at a concentration of 1 mg/mL, ready for conjugation. Created using Proteintech's proprietary in-house recombinant technology. Recombinant production enables unrivalled batch-to-batch consistency, easy scale-up, and future security of supply.

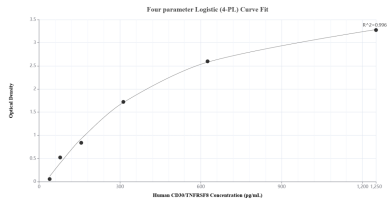
Matched antibody pairs are designed for use in a variety of assays and platforms that require matched antibody pairs.

Antibody use should be optimized for each application and assay.

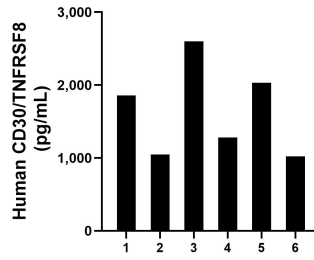
Storage

Storage:
Store at -80°C.
The product is shipped with ice packs. Upon receipt, store it immediately at -80°C
Storage buffer:
PBS only

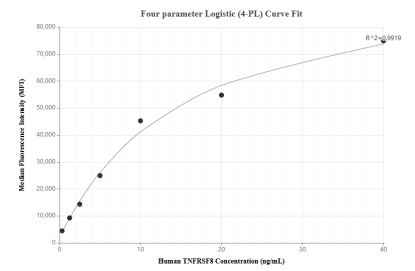
Selected Validation Data



Sandwich ELISA standard curve of MP01137-1, Human CD30/TNFRSF8 Recombinant Matched Antibody Pair - PBS only. 84241-2-PBS was coated to a plate as the capture antibody and incubated with serial dilutions of standard RP02334. 84241-4-PBS was HRP conjugated as the detection antibody. Range: 39.1-1250 pg/mL



Serum of six individual healthy human donors was measured. The CD30/TNFRSF8 concentration of detected samples was determined to be 1,639.1 pg/mL with a range of 1,021.2-2,597.7 pg/mL



Cytometric bead array standard curve of MP01137-1, TNFRSF8/CD30 Recombinant Matched Antibody Pair, PBS Only. Capture antibody: 84241-2-PBS. Detection antibody: 84241-4-PBS. Standard: RP02334. Range: 0.313-40 ng/mL