

For Research Use Only

Siglec-7/CD328 Recombinant Matched Antibody Pair, PBS Only



Catalog Number:MP01156-2

Capture Antibody Information

Catalog Number:
84253-2-PBS

Host:
Rabbit

Isotype:
IgG

Purification Method:
Protein A purification

Clone ID:
241525C10

Reactivity:
human

GenBank:
NM_014385.4

Conjugate:
Unconjugated

Full name:
sialic acid binding Ig-like lectin 7

Gene ID:
27036

Detection Antibody Information

Catalog Number:
84253-1-PBS

Host:
Rabbit

Isotype:
IgG

Purification Method:
Protein A purification

Clone ID:
241525B2

Reactivity:
human

GenBank:
NM_014385.4

Conjugate:
Unconjugated

Full name:
sialic acid binding Ig-like lectin 7

Gene ID:
27036

Applications

Tested Applications:
Cytometric bead array, Sandwich ELISA

Range:
0.313-40 ng/mL (Cytometric Bead Array)
78.1-5000 pg/mL (Sandwich ELISA)

Recommended Dilutions:
It is recommended that this reagent should be titrated in each testing system to obtain optimal results.

Product Information

MP01156-2 targets Siglec-7/CD328 in immunoassays as a matched antibody pair. Validated in Cytometric bead array, Sandwich ELISA.

Capture antibody: Siglec-7/CD328 Recombinant antibody, PBS Only (Capture) 84253-2-PBS (241525C10). 100 µg. Concentration 1 mg/ml.

Detection antibody: Siglec-7/CD328 Recombinant antibody, PBS Only (Detector) 84253-1-PBS (241525B2). 100 µg. Concentration 1 mg/ml.

Alternative Siglec-7/CD328 matched antibody pairs: MP01156-1

Unconjugated rabbit recombinant monoclonal antibody pair in PBS only storage buffer at a concentration of 1 mg/mL, ready for conjugation. Created using Proteintech's proprietary in-house recombinant technology. Recombinant production enables unrivalled batch-to-batch consistency, easy scale-up, and future security of supply.

Matched antibody pairs are designed for use in a variety of assays and platforms that require matched antibody pairs.

Antibody use should be optimized for each application and assay.

Storage

Storage:
Store at -80°C.

The product is shipped with ice packs. Upon receipt, store it immediately at -80°C

Storage buffer:
PBS only

For technical support and original validation data for this product please contact:

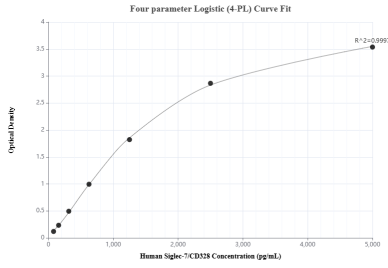
T: 4006900926

E: Proteintech-CN@ptglab.com

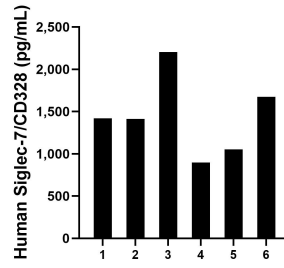
W: ptgcn.com

This product is exclusively available under Proteintech Group brand and is not available to purchase from any other manufacturer.

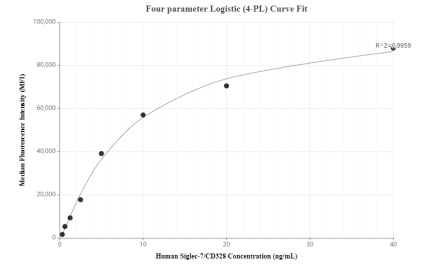
Selected Validation Data



Sandwich ELISA standard curve of MP01156-2, Human Siglec-7/CD328 Recombinant Matched Antibody Pair - PBS only. 84253-2-PBS was coated to a plate as the capture antibody and incubated with serial dilutions of standard Eg1545. 84253-1-PBS was HRP conjugated as the detection antibody. Range: 78.1-5000 pg/mL



Serum of six individual healthy human donors was measured. The human Siglec-7/CD328 concentration of detected samples was determined to be 1,443.6 ng/mL with a range of 897.1 - 2,205.2 ng/mL



Cytometric bead array standard curve of MP01156-2, Siglec-7/CD328 Recombinant Matched Antibody Pair, PBS Only. Capture antibody: 84253-2-PBS. Detection antibody: 84253-1-PBS. Standard: Eg1545. Range: 0.313-40 ng/mL