

For Research Use Only

# SLAMF7/CD319 Recombinant Matched Antibody Pair, PBS Only



Catalog Number:MP01157-1

## Capture Antibody Information

Catalog Number:  
84254-4-PBS

Host:  
Rabbit

Isotype:  
IgG

Purification Method:  
Protein A purification

Clone ID:  
241321F10

Reactivity:  
human

GenBank:  
BC027867

Conjugate:  
Unconjugated

Full name:  
SLAM family member 7

Gene ID:  
57823

## Detection Antibody Information

Catalog Number:  
84254-2-PBS

Host:  
Rabbit

Isotype:  
IgG

Purification Method:  
Protein A purification

Clone ID:  
241321C3

Reactivity:  
human

GenBank:  
BC027867

Conjugate:  
Unconjugated

Full name:  
SLAM family member 7

Gene ID:  
57823

## Applications

Tested Applications:  
Cytometric bead array

Range:  
0.313-40 ng/mL (Cytometric Bead Array)

Recommended Dilutions:  
It is recommended that this reagent should be titrated in each testing system to obtain optimal results.

## Product Information

MP01157-1 targets SLAMF7/CD319 in immunoassays as a matched antibody pair. Validated in Cytometric bead array.

Capture antibody: SLAMF7 Recombinant antibody, PBS Only (Capture) 84254-4-PBS (241321F10). 100 µg. Concentration 1 mg/ml.

Detection antibody: SLAMF7 Recombinant antibody, PBS Only (Detector) 84254-2-PBS (241321C3). 100 µg. Concentration 1 mg/ml.

Alternative SLAMF7/CD319 matched antibody pairs: MP01157-2

Unconjugated rabbit recombinant monoclonal antibody pair in PBS only storage buffer at a concentration of 1 mg/mL, ready for conjugation. Created using Proteintech's proprietary in-house recombinant technology. Recombinant production enables unrivalled batch-to-batch consistency, easy scale-up, and future security of supply.

Matched antibody pairs are designed for use in a variety of assays and platforms that require matched antibody pairs.

Antibody use should be optimized for each application and assay.

## Storage

Storage:  
Store at -80°C.

The product is shipped with ice packs. Upon receipt, store it immediately at -80°C

Storage buffer:  
PBS only

For technical support and original validation data for this product please contact:

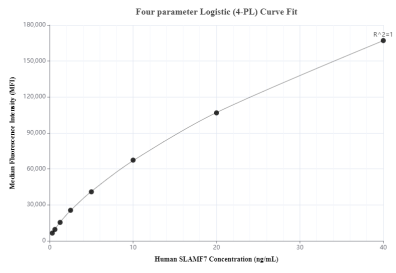
T: 4006900926

E: Proteintech-CN@ptglab.com

W: ptgcn.com

This product is exclusively available under Proteintech Group brand and is not available to purchase from any other manufacturer.

## Selected Validation Data



Cytometric bead array standard curve of MP01157-1, SLAMF7 Recombinant Matched Antibody Pair, PBS Only. Capture antibody: 84254-4-PBS. Detection antibody: 84254-2-PBS. Standard: RP02327. Range: 0.313-40 ng/mL.