

# TRAIL Recombinant Matched Antibody Pair, PBS Only

Catalog Number: MP01166-2

## Capture Antibody Information

**Catalog Number:**  
84280-2-PBS  
**Host:**  
Rabbit  
**Isotype:**  
IgG  
**Purification Method:**  
Protein A purification

**Clone ID:**  
241419A2  
**Reactivity:**  
human  
**GenBank:**  
BC032722

**Conjugate:**  
Unconjugated  
**Full name:**  
tumor necrosis factor (ligand) superfamily, member 10  
**Gene ID:**  
8743

## Detection Antibody Information

**Catalog Number:**  
84280-3-PBS  
**Host:**  
Rabbit  
**Isotype:**  
IgG  
**Purification Method:**  
Protein A purification

**Clone ID:**  
241419G6  
**Reactivity:**  
human  
**GenBank:**  
BC032722

**Conjugate:**  
Unconjugated  
**Full name:**  
tumor necrosis factor (ligand) superfamily, member 10  
**Gene ID:**  
8743

## Applications

**Tested Applications:**  
Cytometric bead array

**Range:**  
0.313-40 ng/mL (Cytometric Bead Array)

**Recommended Dilutions:**  
It is recommended that this reagent should be titrated in each testing system to obtain optimal results.

## Product Information

MP01166-2 targets TRAIL in immunoassays as a matched antibody pair. Validated in Cytometric bead array.

Capture antibody: TRAIL Recombinant antibody, PBS Only (Capture) 84280-2-PBS (241419A2). 100 µg. Concentration 1 mg/ml.

Detection antibody: TRAIL Recombinant antibody, PBS Only (Detector) 84280-3-PBS (241419G6). 100 µg. Concentration 1 mg/ml.

Alternative TRAIL matched antibody pairs: MP01166-1, MP01166-3, MP50341-1

Unconjugated rabbit recombinant monoclonal antibody pair in PBS only storage buffer at a concentration of 1 mg/mL, ready for conjugation. Created using Proteintech's proprietary in-house recombinant technology. Recombinant production enables unrivalled batch-to-batch consistency, easy scale-up, and future security of supply.

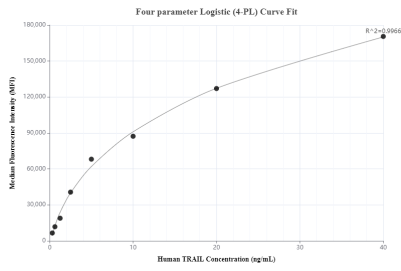
Matched antibody pairs are designed for use in a variety of assays and platforms that require matched antibody pairs.

Antibody use should be optimized for each application and assay.

## Storage

**Storage:**  
Store at -80°C.  
**The product is shipped with ice packs. Upon receipt, store it immediately at -80°C**  
**Storage buffer:**  
PBS only

## Selected Validation Data



Cytometric bead array standard curve of MP01166-2, TRAIL Recombinant Matched Antibody Pair, PBS Only. Capture antibody: 84280-2-PBS. Detection antibody: 84280-3-PBS. Standard: RP02339. Range: 0.313-40 ng/mL