

For Research Use Only

# BTLA/CD272 Recombinant Matched Antibody Pair, PBS Only



Catalog Number:MP01168-4

## Capture Antibody Information

Catalog Number:

84262-5-PBS

Host:

Rabbit

Isotype:

IgG

Purification Method:

Protein A purification

Clone ID:

241319B1

Reactivity:

human

GenBank:

BC107091

Conjugate:

Unconjugated

Full name:

B and T lymphocyte associated

Gene ID:

151888

## Detection Antibody Information

Catalog Number:

84262-6-PBS

Host:

Rabbit

Isotype:

IgG

Purification Method:

Protein A purification

Clone ID:

241319C11

Reactivity:

human

GenBank:

BC107091

Conjugate:

Unconjugated

Full name:

B and T lymphocyte associated

Gene ID:

151888

## Applications

Tested Applications:

Sandwich ELISA

Range:

4.88-313 pg/mL (Sandwich ELISA)

Recommended Dilutions:

It is recommended that this reagent should be titrated in each testing system to obtain optimal results.

## Product Information

MP01168-4 targets BTLA/CD272 in immunoassays as a matched antibody pair. Validated in Sandwich ELISA.

Capture antibody: BTLA/CD272 Recombinant antibody, PBS Only (Capture) 84262-5-PBS (241319B1). 100  $\mu$ g. Concentration 1 mg/mL.

Detection antibody: BTLA Recombinant antibody, PBS Only (Detector) 84262-6-PBS (241319C11). 100  $\mu$ g. Concentration 1 mg/mL.

Alternative BTLA/CD272 matched antibody pairs: MP01168-1, MP01168-2, MP01168-3

Unconjugated rabbit recombinant monoclonal antibody pair in PBS only storage buffer at a concentration of 1 mg/mL, ready for conjugation. Created using Proteintech's proprietary in-house recombinant technology. Recombinant production enables unrivalled batch-to-batch consistency, easy scale-up, and future security of supply.

Matched antibody pairs are designed for use in a variety of assays and platforms that require matched antibody pairs.

Antibody use should be optimized for each application and assay.

## Storage

Storage:

Store at -80°C.

**The product is shipped with ice packs. Upon receipt, store it immediately at -80°C**

Storage buffer:

PBS only

For technical support and original validation data for this product please contact:

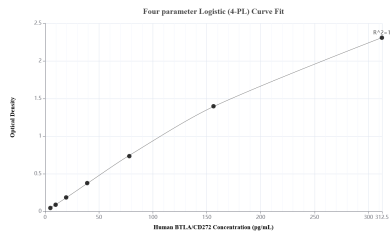
T: 4006900926

E: Proteintech-CN@ptglab.com

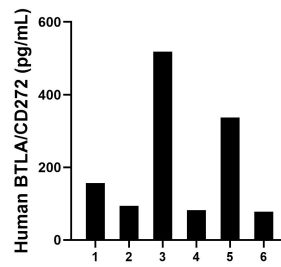
W: ptgcn.com

**This product is exclusively available under Proteintech Group brand and is not available to purchase from any other manufacturer.**

## Selected Validation Data



Sandwich ELISA standard curve of MP01168-4, Human BTLA/CD272 Recombinant Matched Antibody Pair - PBS only. 84262-5-PBS was coated to a plate as the capture antibody and incubated with serial dilutions of standard RP02326. 84262-6-PBS was HRP conjugated as the detection antibody. Range: 4.88-313 pg/mL



Serum of six individual healthy human donors was measured. The BTLA/CD272 concentration of detected samples was determined to be 211.0 ng/mL with a range of 78.0-518.0 ng/mL