

For Research Use Only

# ADAM17 Recombinant Matched Antibody Pair, PBS Only



Catalog Number:MP01169-3

## Capture Antibody Information

**Catalog Number:**  
84292-3-PBS  
**Host:**  
Rabbit  
**Isotype:**  
IgG  
**Purification Method:**  
Protein A purification

**Clone ID:**  
241305E9  
**Reactivity:**  
human  
**GenBank:**  
BC136783  
**Immunogen Catalog Number:**  
Ag32418

**Conjugate:**  
Unconjugated  
**Full name:**  
ADAM metalloproteinase domain 17  
**Gene ID:**  
6868

## Detection Antibody Information

**Catalog Number:**  
84292-4-PBS  
**Host:**  
Rabbit  
**Isotype:**  
IgG  
**Purification Method:**  
Protein A purification

**Clone ID:**  
241305A2  
**Reactivity:**  
human, mouse  
**GenBank:**  
BC136783  
**Immunogen Catalog Number:**  
Ag32418

**Conjugate:**  
Unconjugated  
**Full name:**  
ADAM metalloproteinase domain 17  
**Gene ID:**  
6868

## Applications

**Tested Applications:**  
Sandwich ELISA

**Range:**  
78.1-5000 pg/mL (Sandwich ELISA)

**Recommended Dilutions:**  
It is recommended that this reagent should be titrated in each testing system to obtain optimal results.

## Product Information

MP01169-3 targets ADAM17 in immunoassays as a matched antibody pair. Validated in Sandwich ELISA.

Capture antibody: ADAM17 Recombinant antibody, PBS Only (Capture) 84292-3-PBS (241305E9). 100 µg. Concentration 1 mg/mL.

Detection antibody: ADAM17 Recombinant antibody, PBS Only (Detector) 84292-4-PBS (241305A2). 100 µg. Concentration 1 mg/mL.

Unconjugated rabbit recombinant monoclonal antibody pair in PBS only storage buffer at a concentration of 1 mg/mL, ready for conjugation. Created using Proteintech's proprietary in-house recombinant technology. Recombinant production enables unrivalled batch-to-batch consistency, easy scale-up, and future security of supply.

Matched antibody pairs are designed for use in a variety of assays and platforms that require matched antibody pairs.

Antibody use should be optimized for each application and assay.

## Storage

**Storage:**  
Store at -80°C.  
**The product is shipped with ice packs. Upon receipt, store it immediately at -80°C**  
**Storage buffer:**  
PBS only

For technical support and original validation data for this product please contact:

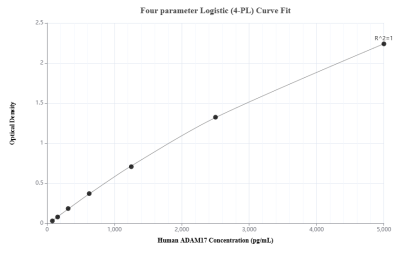
T: 4006900926

E: Proteintech-CN@ptglab.com

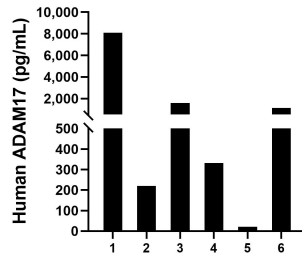
W: ptgcn.com

**This product is exclusively available under Proteintech Group brand and is not available to purchase from any other manufacturer.**

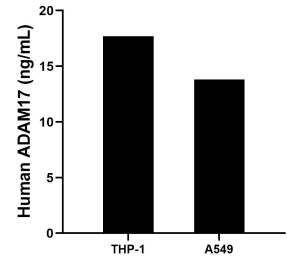
## Selected Validation Data



Sandwich ELISA standard curve of MP01169-3, Human ADAM17 Recombinant Matched Antibody Pair - PBS only. 84292-3-PBS was coated to a plate as the capture antibody and incubated with serial dilutions of standard Ag32418. 84292-4-PBS was HRP conjugated as the detection antibody. Range: 78.1-5000 pg/mL



Serum of six individual healthy human donors was measured. The human ADAM17 concentration of detected samples was determined to be 1,898.9 pg/mL with a range of 21.5 - 8,096.2 ng/mL



The mean ADAM17 concentration was determined to be 18.51 ng/mL in THP-1 cell extract based on a 4.4 mg/mL extract load and 13.76 ng/mL in A549 cell extract based on a 2.7 mg/mL extract load.