

For Research Use Only

# GBP2 Recombinant Matched Antibody Pair, PBS Only



Catalog Number:MP01177-4

## Capture Antibody Information

**Catalog Number:**  
84264-3-PBS  
**Host:**  
Rabbit  
**Isotype:**  
IgG  
**Purification Method:**  
Protein A purification

**Clone ID:**  
241580D5  
**Reactivity:**  
human  
**GenBank:**  
BC022272  
**Immunogen Catalog Number:**  
Ag2425

**Conjugate:**  
Unconjugated  
**Full name:**  
guanylate binding protein 2,  
interferon-inducible  
**Gene ID:**  
2634

## Detection Antibody Information

**Catalog Number:**  
84264-7-PBS  
**Host:**  
Rabbit  
**Isotype:**  
IgG  
**Purification Method:**  
Protein A purification

**Clone ID:**  
241580F10  
**Reactivity:**  
human  
**GenBank:**  
BC022272  
**Immunogen Catalog Number:**  
Ag2425

**Conjugate:**  
Unconjugated  
**Full name:**  
guanylate binding protein 2,  
interferon-inducible  
**Gene ID:**  
2634

## Applications

**Tested Applications:**  
Sandwich ELISA

**Range:**  
78.1-5000 pg/mL (Sandwich ELISA)

**Recommended Dilutions:**  
It is recommended that this reagent should be titrated in each testing system to obtain optimal results.

## Product Information

MP01177-4 targets GBP2 in immunoassays as a matched antibody pair. Validated in Sandwich ELISA.

Capture antibody: GBP2 Recombinant antibody, PBS Only (Capture/Detector) 84264-3-PBS (241580D5). 100 µg. Concentration 1 mg/ml.

Detection antibody: GBP2 Recombinant antibody, PBS Only (Detector) 84264-7-PBS (241580F10). 100 µg. Concentration 1 mg/ml.

Unconjugated rabbit recombinant monoclonal antibody pair in PBS only storage buffer at a concentration of 1 mg/mL, ready for conjugation. Created using Proteintech's proprietary in-house recombinant technology. Recombinant production enables unrivalled batch-to-batch consistency, easy scale-up, and future security of supply.

Matched antibody pairs are designed for use in a variety of assays and platforms that require matched antibody pairs.

Antibody use should be optimized for each application and assay.

## Storage

**Storage:**  
Store at -80°C.  
**The product is shipped with ice packs. Upon receipt, store it immediately at -80°C**  
**Storage buffer:**  
PBS only

For technical support and original validation data for this product please contact:

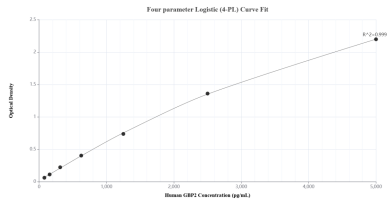
T: 4006900926

E: Proteintech-CN@ptglab.com

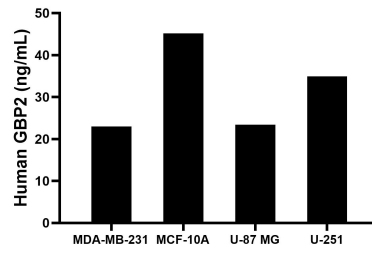
W: ptgcn.com

**This product is exclusively available under Proteintech Group brand and is not available to purchase from any other manufacturer.**

## Selected Validation Data



Sandwich ELISA standard curve of MP01177-4, Human GBP2 Recombinant Matched Antibody Pair - PBS only. 84264-3-PBS was coated to a plate as the capture antibody and incubated with serial dilutions of standard Ag2425. 84264-7-PBS was HRP conjugated as the detection antibody. Range: 78.1-5000 pg/mL



The mean GBP2 concentration was determined to be 23.0 ng/mL in MDA-MB-231 cell extract based on a 1.9 mg/mL extract load, 45.1 ng/mL in MCF-10A cell extract based on a 1.3 mg/mL extract load, 23.4 ng/mL in U-87 MG cell extract based on a 2.0 mg/mL extract load and 34.9 ng/mL in U-251 cell extract based on a 1.2 mg/mL extract load.